



ZAFER CETINEL

POWERED BY  
**exp**™  
UK

@ zafer.cetinel@exp.uk.com

🌐 zafercetinel.exp.uk.com

☎ 01242 374 844



## Priors Park, Prestbury, Cheltenham

Guide Price £300,000

🛏 3 🍳 1 🛋 1

- PRIORS PARK, PRESTBURY
- THREE DOUBLE BEDROOMS
- KITCHEN / DINER
- SEPARATE LIVING ROOM
- UTILITY ROOM
- DOWNSTAIRS TOILET
- LARGE ENTRANCE HALL AND LANDING
- READY TO MOVE IN
- LARGE FRONT GARDEN AND A PRIVATE REAR GARDEN
- PLEASE QUOTE REF ZC 0364



This well-appointed three-bedroom semi-detached property is located in Priors Park, a charming area of Prestbury village in Cheltenham. It benefits from proximity to excellent schools, including St. Mary's Federation School for primary and juniors, as well as options for secondary education like Bishops Cleeve and Winchcombe.

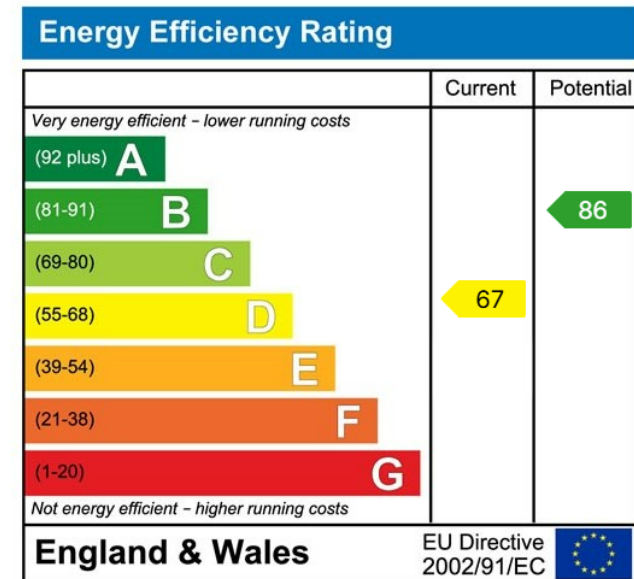
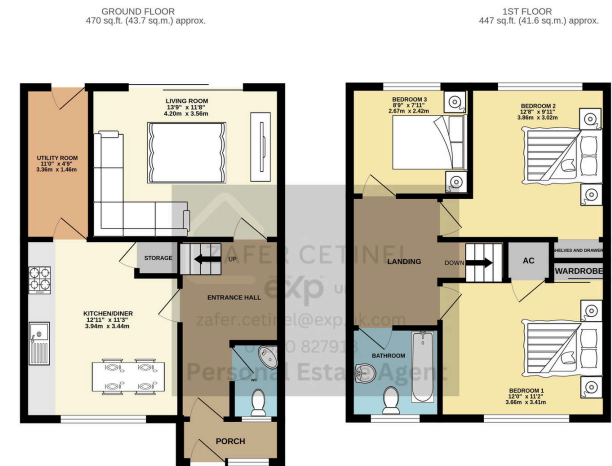
The property is spread across two floors, featuring an extended porch that leads to a welcoming entrance hall with a downstairs toilet. The spacious kitchen-diner is ideal for family meals and connects to a separate utility room. The light-filled lounge at the rear of the house opens onto a generous garden.

Upstairs, you'll find three double bedrooms, including a master with built-in storage, and a second bedroom with bespoke integrated features. The low-maintenance rear and larger front lawn provide ample outdoor space for children to play. This home offers a perfect blend of comfort and convenience in a









eXp World UK Ltd is a registered company at Level 37, 25 Canada Square, London, E14 5LQ.  
Registered company number is 12016573. VAT Registration Number is 327 4120 29