



ZAFER CETINEL

POWERED BY
expTM UK

@ zafer.cetinel@exp.uk.com

zafercetinel.exp.uk.com

01242 374 844

Studland Drive, Prestbury, Cheltenham, GL52 5BU

Guide Price £400,000

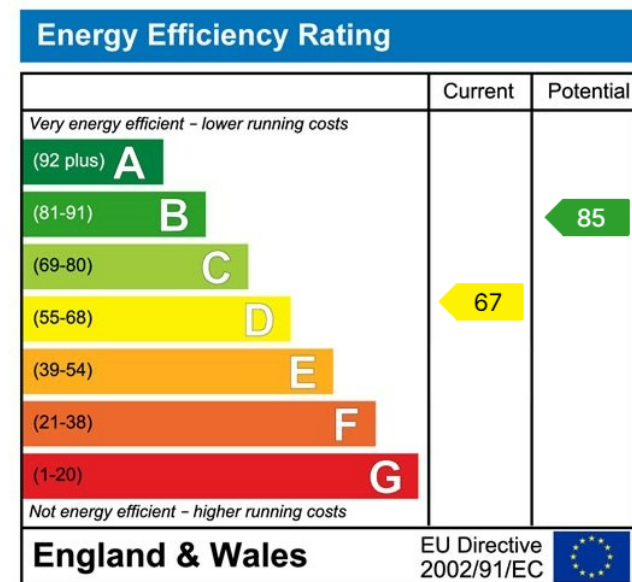
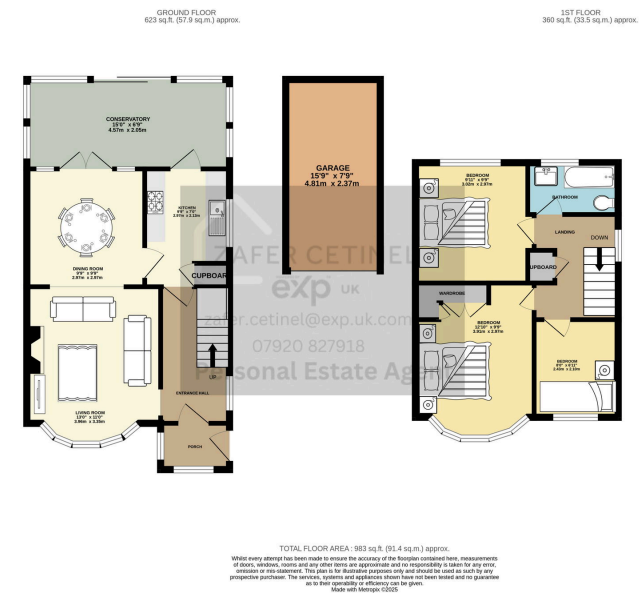
🛏 3 🍽 1 🛋 2

- STUDLAND DRIVE, PRESTBURY
- TWO RECEPTION ROOMS
- POTENTIAL FOR EXTENSION
- TWO RECEPTION ROOMS
- BRILLIANT WALKS NEAR BY
- THREE BEDROOM 1930'S BUILD BAY FRONTED HOUSE
- EXCELLENT CONDITION
- GARAGE and DRIVEWAY
- GREAT SCHOOL CATCHMENT FOR ALL AGES
- PLEASE QUOTE REF ZC 0364



Welcome to this charming 1930s semi-detached bay-fronted home in the heart of Prestbury village, one of Cheltenham's most sought-after locations. Enjoy stunning views of Cleeve Hill from your spacious garden and large conservatory. Inside, you'll find a light-filled entrance hall, a cozy bay-fronted lounge with a fireplace, a dining room, conservatory and kitchen. Upstairs, there are three comfortable bedrooms, including a master with fitted wardrobes, and a newly updated bathroom. The property also offers a driveway for two cars. The area is perfect for walking, with beautiful trails right on your doorstep, and it's located in a great catchment area for all ages. This delightful home is ready for you to make it your own!





eXp World UK Ltd is a registered company at Level 37, 25 Canada Square, London, E14 5LQ.
Registered company number is 12016573. VAT Registration Number is 327 4120 29