

Launceston Road, Callington, PL17

Guide Price £550,000

5 3 2

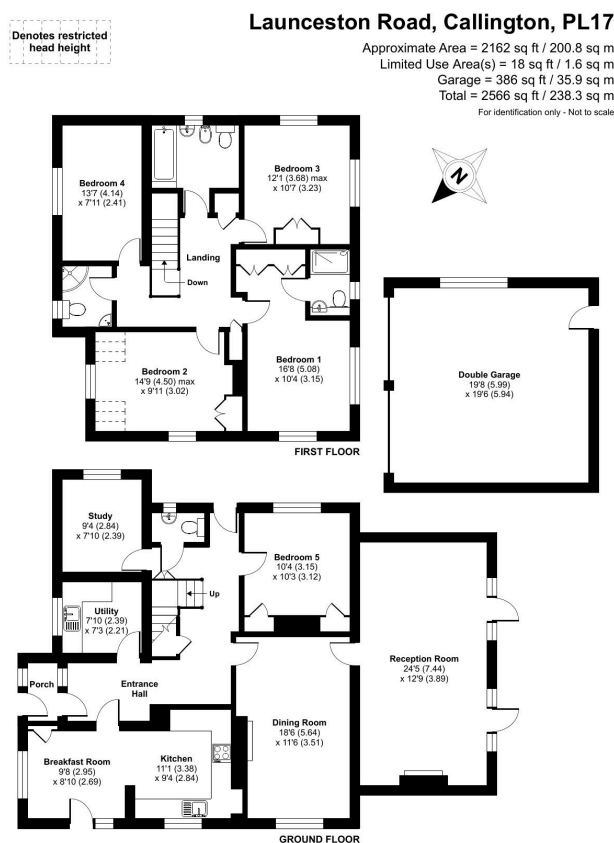


A wonderful opportunity to purchase a five-bedroom detached family home situated on a 0.4 acre plot within easy reach of Callington Town Centre. The property offers comfortable and practical accommodation for entertaining or family life. This spacious family home benefits from a private driveway, beautiful countryside views and a south-west facing garden. The double garage offers the possibility of running a business from home with ample parking for clients.

Callington is a charming Cornish town located within a prime location in South East Cornwall and just 15 miles from Plymouth City Centre.

Key Features

- TO ARRANGE A VIEWING PLEASE QUOTE BL0650
- Five Bedrooms (1 Ensuite)
- Detached Double Garage
- South-West Facing Garden & Terrace
- Family Bathroom, Shower Room & Downstairs Cloakroom
- Detached Family Home
- 0.4 Acre Plot
- Beautiful Countryside Views
- Double Aspect Reception Room
- Study & Utility Room



Floor plan produced in accordance with RICS Property Measurement Standards incorporating International Property Measurement Standards (IPMS2 Residential). © richcom 2025. Produced for Ben Estates TA Ben Langton Powered By exp. REF: 1200564