



DARYL HILL POWERED BY exp TM UK

@ daryl.hill@exp.uk.com

🌐 darylhill.exp.uk.com

☎ 07921 060 390

4 Notley Place, Hucclecote

£430,000

🛏 3 🍽 2 🚗 2



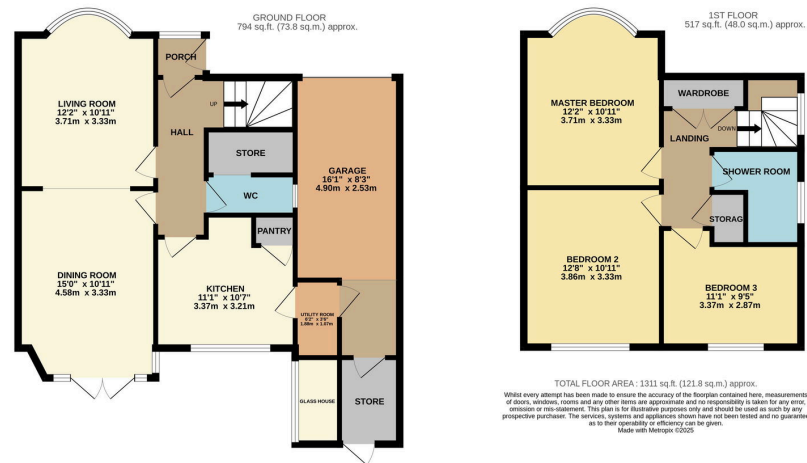
- EXTENSIVE AND SPACIOUS FAMILY HOME
- THREE DOUBLE BEDROOMS
- GROUND FLOOR WC + 1ST FLOOR SHOWER ROOM
- AMPLE DRIVEWAY TO FRONT
- WELL APPOINTED KITCHEN
- WELL LOCATED IN POPULAR IN HUCCLECOTE
- GENEROUS THROUGH LOUNGE/DINER
- APPROX 100FT GARDEN TO REAR
- SINGLE GARAGE AND OUTBUILDINGS
- REF DH0109



Daryl Hill is delighted to present this beautiful family home set in this desirable location within Hucclecote. The spacious home sits on a large plot with circa 100ft of garden to the rear and a driveway for 2-3 vehicles to front.

The internal accommodation consists of entrance hall with ground floor WC, a stunning through lounge/diner with bay window features and a fitted kitchen on the ground floor. The first floor provides three double bedrooms and a well appointed shower room. To the side a single garage and outbuildings for storage and utility space.

REF DH0109



eXp World UK Ltd is a registered company at Level 37, 25 Canada Square, London, E14 5LQ.

Registered company number is 12016573. VAT Registration Number is 327 4120 29