

Delaware Court, Drakewalls, Gunnislake, PL18

Guide Price £250,000

3 1 1



A wonderful opportunity to purchase a three-bedroom extended terraced home within an exclusive courtyard development. The property benefits from an allocated parking space, single garage and no onward chain.

Situated within the village of Drakewalls and approximately 4.7 miles away from Callington and 5.6 miles from Tavistock. Amenities within the area include a convenience store with a petrol station, primary schools, pubs and a train station with regular trains to and from Plymouth. The area provides some idyllic countryside walks with Cotehele estate and house, Kit Hill and the Tamar Valley all nearby.

Key Features

- TO ARRANGE A VIEWING PLEASE QUOTE BL0650
- No Onward Chain
- Extended Kitchen/Diner
- Allocated Parking Space
- Exclusive Courtyard Development
- Three Bedrooms
- Front & Rear Gardens
- Garage
- Modern Shower Room & Downstairs W/C
- Freehold

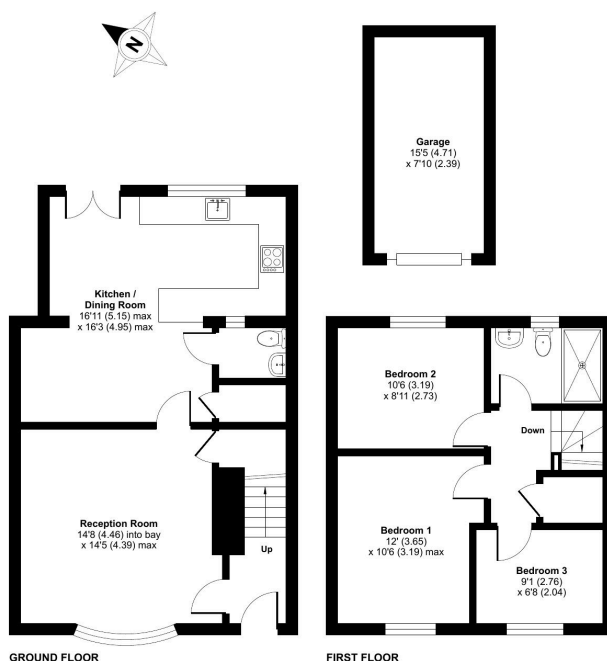
Delaware Court, Gunnislake, PL18

Approximate Area = 963 sq ft / 89.4 sq m

Garage = 121 sq ft / 11.2 sq m

Total = 1084 sq ft / 100.6 sq m

For identification only - Not to scale



Floor plan produced in accordance with RICS Property Measurement Standards incorporating International Property Measurement Standards (IPMS2 Residential). © richcom 2025. Produced for Ben Estates TA Ben Langton Powered By exp. REF: 1245960