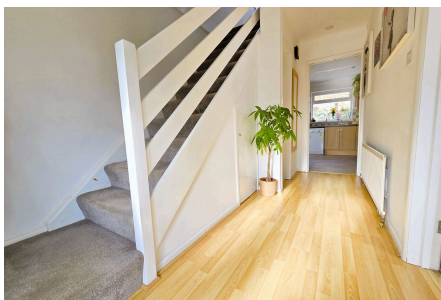


29 Trelawney Road

Guide Price £400,000

4 1 2



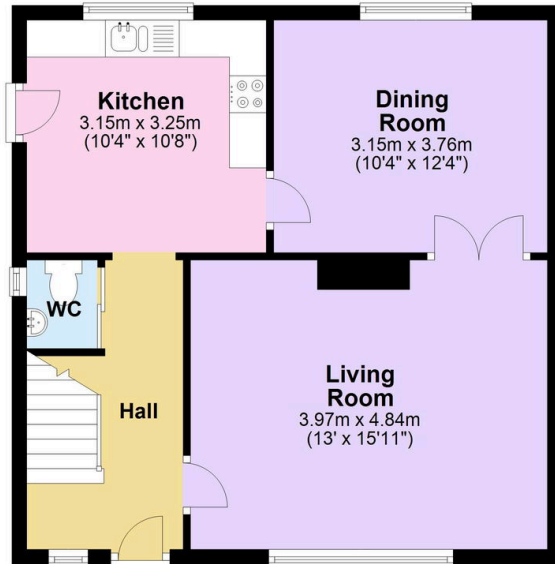
A beautifully presented four-bedroom detached property offering generous living space and scope for extension, subject to necessary planning consents. Ideally positioned in a peaceful setting adjacent to Coombe Woods, yet within easy walking distance of Saltash town centre. The ground floor features a welcoming entrance hall leading to a bright, spacious living room which flows seamlessly into a separate dining room, perfect for family gatherings and entertaining. The modern kitchen is well-appointed with contemporary fixtures and fittings. A convenient ground floor WC completes this level. Upstairs, you'll find four well-proportioned bedrooms, all benefiting from natural light.

Key Features

- Freehold - Council Tax Band D - EPC TBC
- Impressive 4 Bedroom Property
- Generously Sized, Modern Kitchen
- Bright & Airy Living Rooms
- Separate Dining Room
- Downstairs WC
- Family Bathroom & Separate WC
- Substantial Tiered Wrap Around Garden
- Garage & Two Driveways
- Quote BH0675 To Book Your Viewing

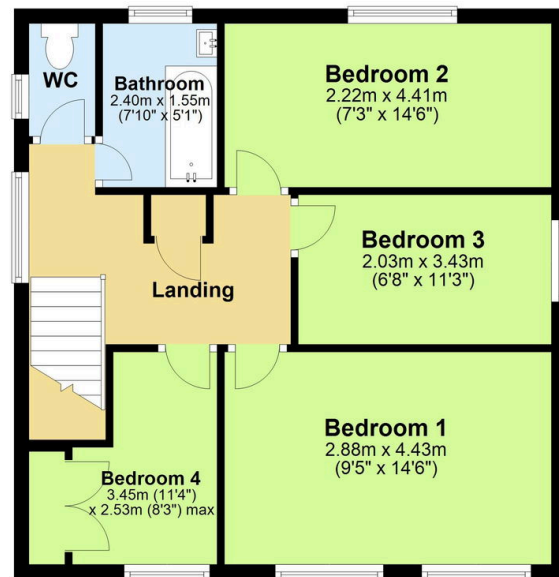
Ground Floor

Approx. 55.2 sq. metres (593.9 sq. feet)



First Floor

Approx. 55.2 sq. metres (594.3 sq. feet)



Total area: approx. 110.4 sq. metres (1188.2 sq. feet)