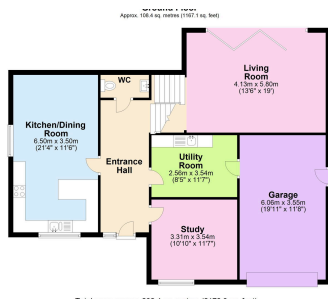


## Kew Venna, Development of Nine Executive Detached New Build Houses

Guide Price £695,000

4 3 2



Introducing Kew Venna, an exquisite development of nine executive four bedroom detached luxury homes under construction by renowned local Award Winning builder Breckland Development Ltd. Situated in Chapel on a southerly facing site each property is built to a superior standard with high specification finishes. Quote Ref DT0134.

## Key Features

- An Exquisite Development of Nine Executive four Bedroom Detached Luxury Homes
- Built to a Superior Standard with High Specification Finishes
- Two En-suites, Dressing Room and Family Bathroom
- Large Integral Single Garage and Driveway Parking
- Call For enquiries or to Book your Own Personal Visit to the Site
- Early Release of Plot 3 - Reserve early to Customise it to your Taste!
- The Causley, an Exceptional Executive Detached Four Double Bedroom Three Bathroom House
- Stunning Kitchen/Diner, Study, Living Room and Utility Room
- 2178 sq ft (202.34 Sq m) of Spacious Internal Accommodation
- Quote Ref DT0134

