

Caroline Avenue, Christchurch, BH23 3JR

£875,000

🛏 5 🚿 3 🛋 1

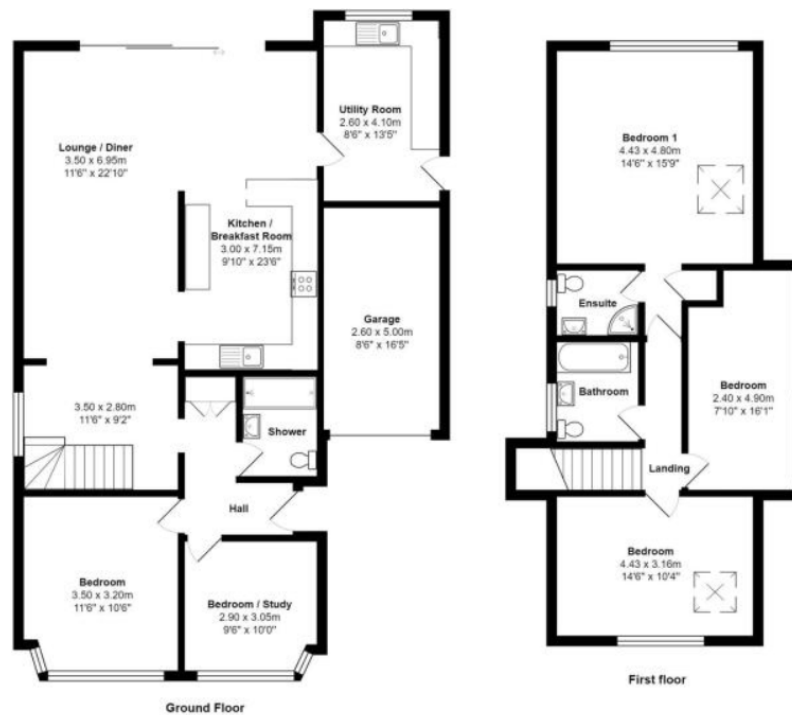


Impressive, modernised detached 5 bedroom family home located in the high desirable area of Mudeford with access to the award winning beaches and well regarded schools.

LUCY SEAKINS



- Detached 5 bedroom chalet
- Open Plan Kitchen/Diner/Living Area
- Large Sunny Rear Garden
- Quiet Residential Location Walkable to Beach
- Modernised and Extended
- Over 1900sqft
- Separate Utility
- Extensive Driveway and Integral Garage
- Immaculate Condition
- Contact Lucy Seakins PROPERTY REF: LS0995



Total Area: 179.5 m² ... 1932 ft²

All measurements are approximate and for display purposes only