

Uphill Drive, Bath, BA1 6PA

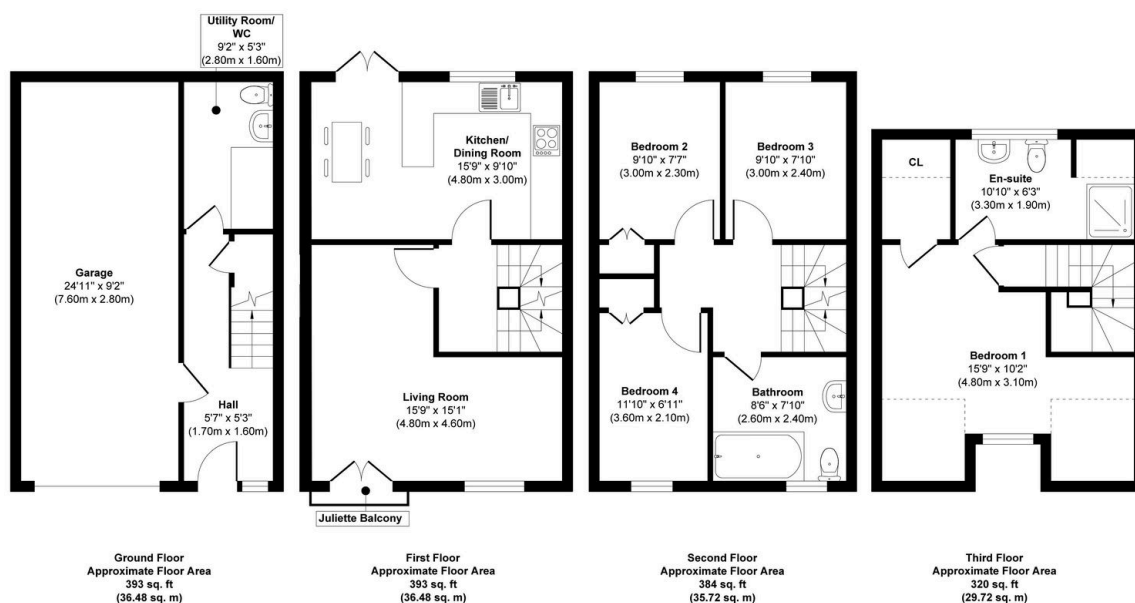
Guide Price £525,000

4 2 2



- Property REF SL0822- S Lord
- Favourable Larkhall Village location
- Four double bedrooms
- Two bath/shower rooms plus utility/WC
- Living Room with distant view and Juliette balcony
- Kitchen/Dining Room opening on to private terrace
- Spacious top floor main bedroom suite
- No through road set away from traffic
- Terrace and lawn garden
- 7.6m x 2.8m garage/workshop and private drive with space for two cars

Uphill Drive, Larkhall, Bath BA1 6PA



Approx. Gross Internal Floor Area 1490 sq. ft / 138.40 sq. m
 Illustration for identification purposes only, measurements are approximate, not to scale.

Situated in a no-through road close to the centre of Larkhall Village, this ten-year-old, four double bedroom modern townhouse provides very flexible and well proportioned living space over four floors, together with terrace and lawn garden, 7.6m x 2.8m garage/workshop/gym and driveway parking. PROPERTY REF SL 0822 - S Lord