

Kyl Cober Parc, Stoke Climsland, PL17

Guide Price £425,000

4 2 1



A four-bedroom detached family home offering spacious and versatile accommodation set over two floors. The property benefits from a private driveway with a garage, a south west facing garden and far reaching countryside views.

Situated within the sought after village of Stoke Climsland and approximately 3 miles from Callington. Amenities within the village include the parish church, village hall, post office, primary school and a sports & social club. There are regular bus services which provide easy access to Callington, Launceston, Plymouth and the surrounding areas.

Key Features

- TO ARRANGE A VIEWING PLEASE QUOTE BL0650
- 4 Bedrooms (1 Ensuite)
- Garage
- Countryside Views
- Popular Village Location
- Detached
- Private Driveway
- South West Facing Garden
- Family Bathroom & Downstairs Cloakroom
- Freehold

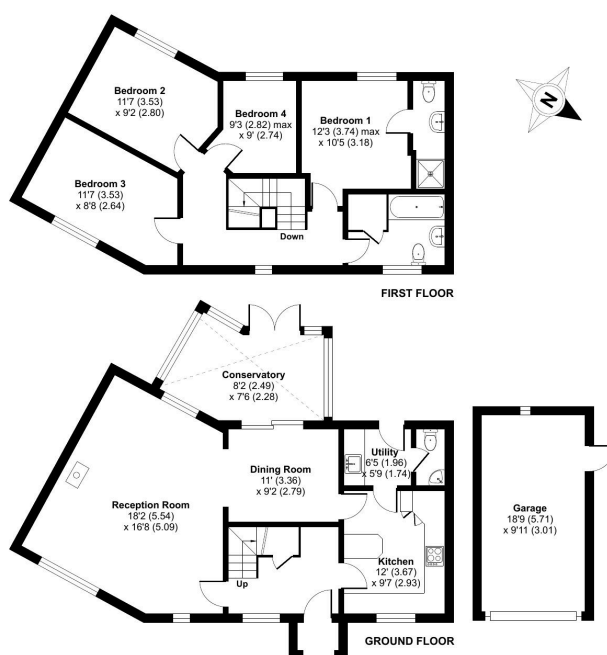
Kyl Cober Parc, Stoke Climsland, Callington, PL17

Approximate Area = 1471 sq ft / 136.6 sq m

Garage = 185 sq ft / 17.1 sq m

Total = 1656 sq ft / 153.7 sq m

For identification only - Not to scale



Floor plan produced in accordance with RICS Property Measurement Standards incorporating International Property Measurement Standards (IPMS2 Residential). © richcom 2025. Produced for Ben Estates T/A Ben Langton Powered by exp. REF: 1238103