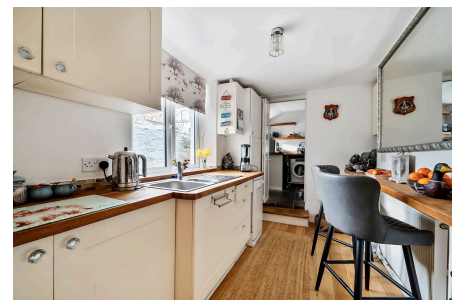


## Hotham Place, Millbridge, Plymouth, PL1

Guide Price £260,000

2 2 1



A wonderful opportunity to purchase a Grade II listed Fisherman's Cottage built in 1846, offering an abundance of charm and character features throughout. The property benefits from two double bedrooms, two bathrooms and no onward chain.

The property is located within walking distance of the train station and City Centre and is perfect for those looking for a unique home within a popular residential area. The area benefits from a range of facilities including shops, pubs, cafes and both primary and secondary schools. Victoria Park is just a stones throw away making it an ideal place for families and individuals alike.

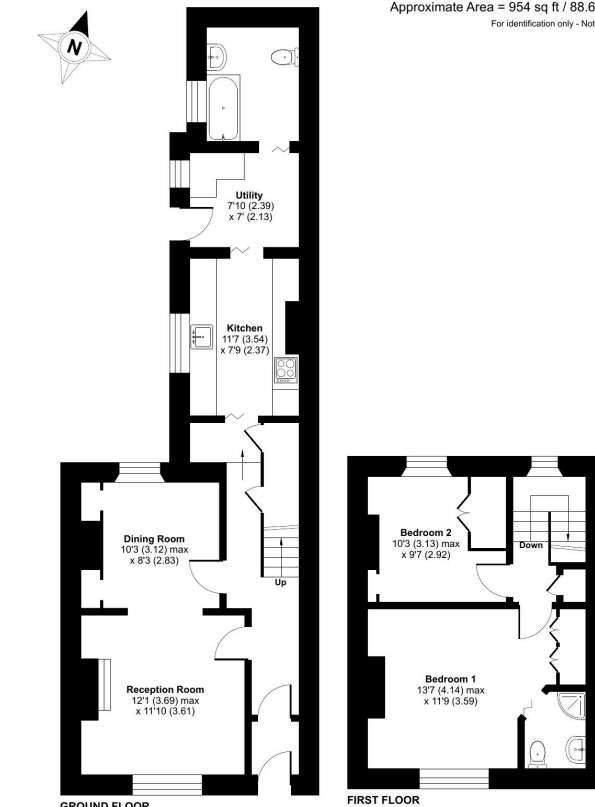
## Key Features

- TO ARRANGE A VIEWING PLEASE QUOTE BL0650
- Two Double Bedrooms
- No Onward Chain
- Millbridge Location
- Utility Room
- Grade II listed Fisherman's Cottage
- Two Bathrooms
- Attractive Courtyard Garden
- Close To Victoria Park
- Freehold

### Hotham Place, Plymouth, PL1

Approximate Area = 954 sq ft / 88.6 sq m

For identification only - Not to scale



Floor plan produced in accordance with RICS Property Measurement Standards incorporating International Property Measurement Standards (IPMS2 Residential). © richcom 2025. Produced for Ben Estates TA Ben Langton Powered By exp. REF: 123670