

All Saints Park, St. Anns Chapel, Gunnislake, PL18

Offers Over £400,000

4 2 1



A four bedroom detached family home offering comfortable and practical accommodation for both entertaining and family life. The property benefits from a private driveway, double garage and far reaching countryside views.

Situated within the village of St, Anns Chapel and approximately 4 miles away from Callington and 6 miles from Tavistock. Amenities within the area include a convenience store with a petrol station, primary schools, pubs and a train station with regular trains to and from Plymouth.

Key Features

- TO ARRANGE A VIEWING PLEASE QUOTE BL0650
- 4 Double Bedrooms (1 Ensuite)
- Double Garage
- Gardens To Side & Rear
- Family Bathroom & Downstairs Cloakroom
- Detached
- Private Driveway
- Countryside Views
- Spacious Accomodation
- Freehold

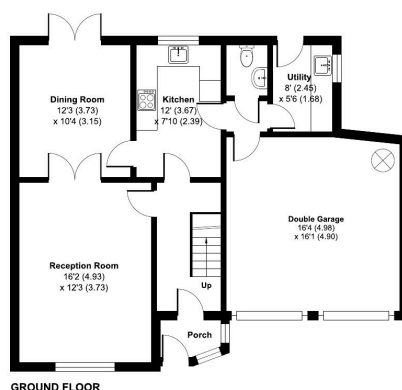
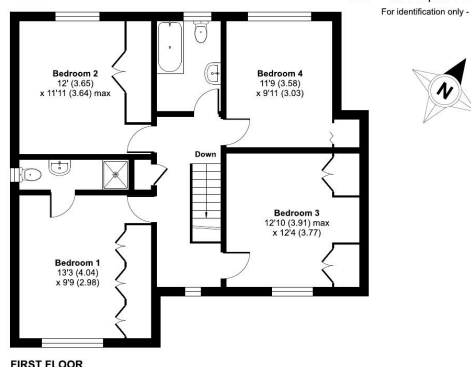
St. Anns Chapel, Gunnislake, PL18

Approximate Area = 1439 sq ft / 133.6 sq m

Garage = 257 sq ft / 23.8 sq m

Total = 1696 sq ft / 157.4 sq m

For identification only - Not to scale



Floor plan produced in accordance with RICS Property Measurement Standards incorporating International Property Measurement Standards (IPMS2 Residential). © richcom 2025. Produced for Ben Estates TA Ben Langton Powered By exp. REF: 1207553