



MARK TOWNEND

exp[®] UK

@ mark.townend@exp.uk.com

🌐 marktownend.exp.uk.com

☎ 07721 180100

Churchend Farm, St. Johns Road, Slimbridge GL2 7DF

Offers Over £900,000

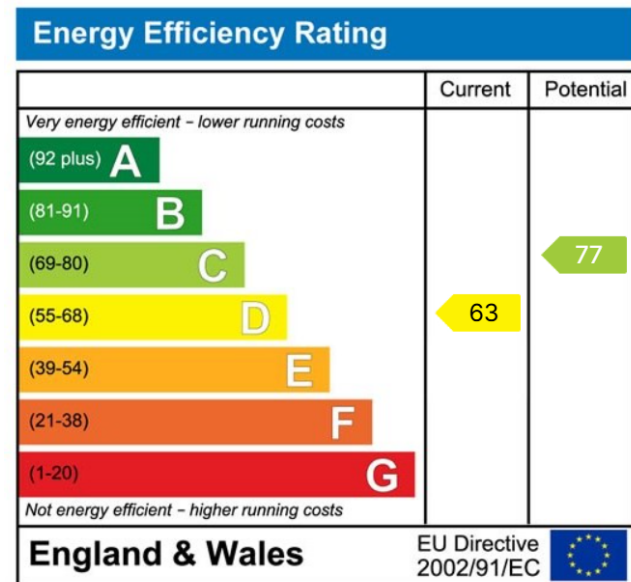
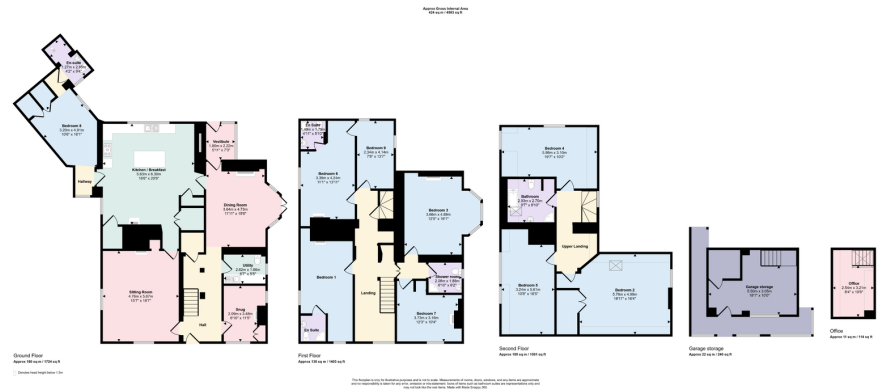
🛏 7 🚿 5 🛋 3

- Ref: MT1071
- Seven bedrooms and five bathrooms
- Farmhouse style open plan kitchen / breakfast room
- Large walled garden
- Versatile living space which can be easily configured to suit
- Grade II Listed Georgian residence with Victorian additions
- Three reception rooms
- Exceptional countryside views towards Cotswolds Hills
- Ample off-road private parking
- Offered with no onward chain



REF: MT1071 Fusing period charm with contemporary upgrades, this beautiful Grade II Listed Georgian farmhouse with Victorian additions offers both space and character with the Cotswolds Hills providing a stunning scenic backdrop. With seven bedrooms, three reception rooms, five bathrooms and a stunning open plan farmhouse kitchen / breakfast room, the property provides versatile accommodation that can be configured to suit the needs of any buyer.





eXp World UK Ltd is a registered company at Corporation Service Company (UK) Limited, 5 Churchill Place, 10th Floor, London, United Kingdom, E14 5HU. Registered company number is 12016573. VAT Registration Number is 327 4120 29