

29 Pondfield Road, Latchbrook

Offers Over £400,000

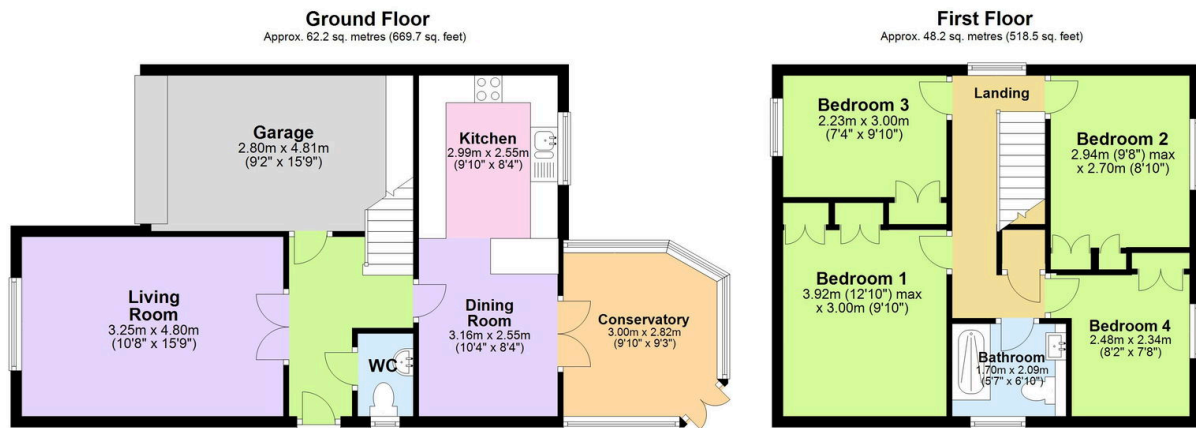
4 1 2



Positioned within the highly popular Latchbrook Estate, this immaculately presented detached home offers spacious and thoughtfully designed accommodation throughout. Step inside and be greeted by a welcoming atmosphere with the hall leading into the heart of the home. The stylish kitchen / diner is newly fitted, with its fabulous breakfast bar - perfect for everyday cooking and entertaining. The dining area flows into the bright and airy conservatory, overlooking the garden, creating an ideal space for relaxation. The ground floor also benefits from a generously sized living room and a convenient downstairs wc. Upstairs, you'll find four well-proportioned bedrooms, each featuring built-in wardrobes providing excellent storage solutions.

Key Features

- Freehold - Council Tax Band D - EPC TBC
- Detached Four Bedroom Home
- Modern Bathroom With Underfloor Heating
- Generously Sized Living Room
- Newly Fitted Kitchen / Diner
- Fabulous Conservatory
- Enclosed Rear Garden
- Driveway & Integral Garage
- Owned Solar Panels
- Quote BH0675 To Book Your Viewing



Total area: approx. 110.4 sq. metres (1188.2 sq. feet)