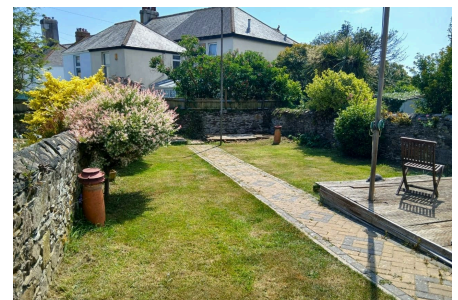
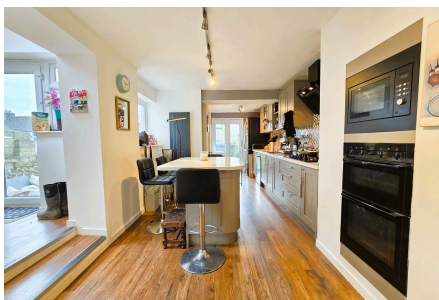


## St. Stephens Road, Saltash, PL12 4BG

Guide Price £390,000

3 3 3



The ground floor presents a welcoming layout beginning with a charming living room with a stunning feature fireplace and a beautiful bay window that floods the space with natural light. A second reception room provides a cosy alternative, flowing into the elegant dining room, enhanced by delightful skylights, creates a bright and airy space perfect for family meals and entertaining. The stylish kitchen is a true highlight, with a contemporary island that provides both practical workspace and a social hub for the home. A convenient downstairs shower room adds practical functionality to the ground floor accommodation.

## Key Features

- Freehold - Council Tax Band C - EPC D
- Stunning Semi-Detached Period Property
- Three Double Bedrooms Plus Loft Conversion
- Two Reception Rooms Plus Dining Room
- Stylish Kitchen
- Three Bathrooms
- Rear Level South-Facing Garden
- Driveway Parking
- Walking Distance To Town Centre, Train Station & Amenities
- No Onward Chain - Quote BH0675 To Book Your Viewing.

