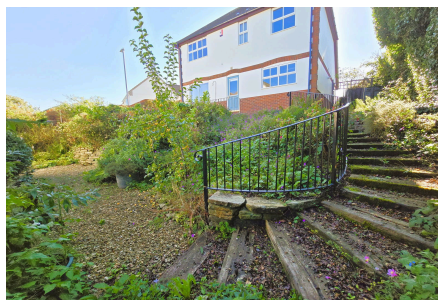


## Smiths Way, Latchbrook, Saltash, PL12 4TP

Guide Price £435,000

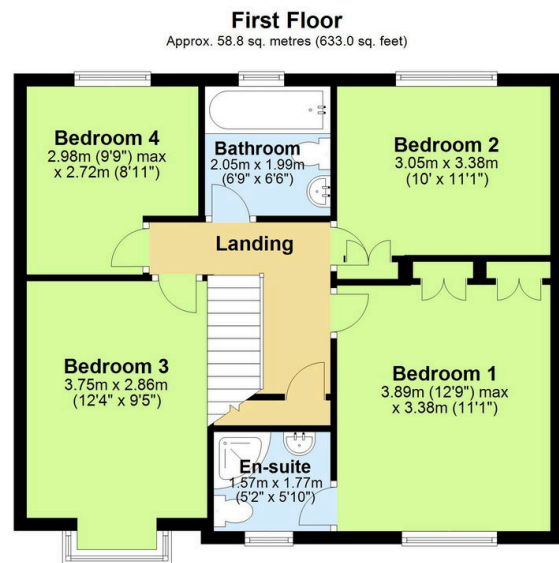
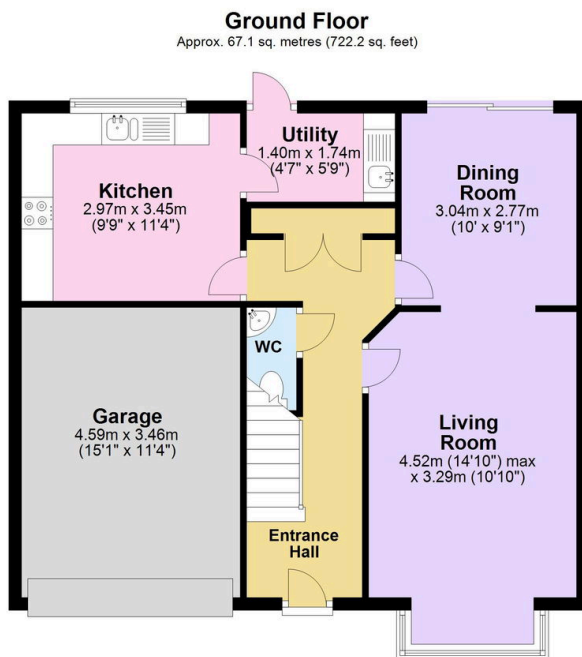
4 2 2



Step inside and be greeted by a warm and welcoming atmosphere with the entrance hall leading to the bright and airy living room. The room impresses with its beautiful bay window and generous dimensions that flows into the dining room, with patio doors leading out to the garden. The contemporary kitchen has ample storage and a separate handy utility room. Upstairs, you'll find a spacious landing, family bathroom and four well-proportioned bedrooms. The master room is a true retreat, offering built-in wardrobes and a modern en-suite shower room. Outside, the well-established garden is a true gem, offering a secluded oasis for alfresco dining, entertaining, or simply relaxing amidst the lush greenery. Other highlights include off-road parking for multiple vehicles, single garage, a handy downstairs wc and plenty of storage.

## Key Features

- Freehold - EPC C - Council Tax Band E
- Immaculately Presented 4 Bedroom Detached Home
- Living Room With Bay Window & Dining Room
- En-suite Shower Room
- Private Rear Garden & Substantial Corner Plot
- No Onward Chain
- Spacious Kitchen & Utility Room
- Garage & Driveway Parking For Multiple Vehicles
- Downstairs WC
- Quote BH0675 To Book Your Viewing



Total area: approx. 125.9 sq. metres (1355.2 sq. feet)