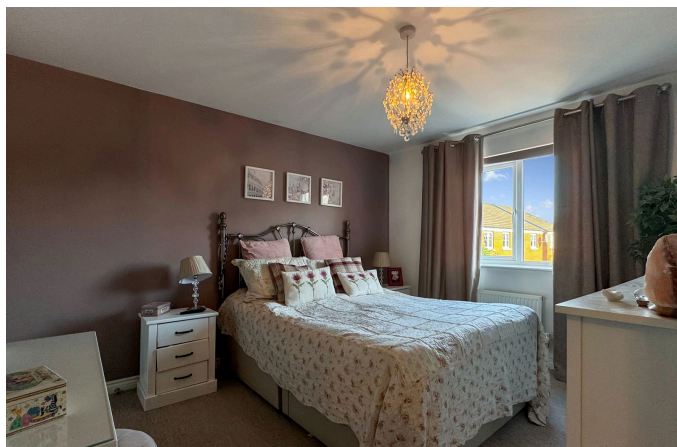


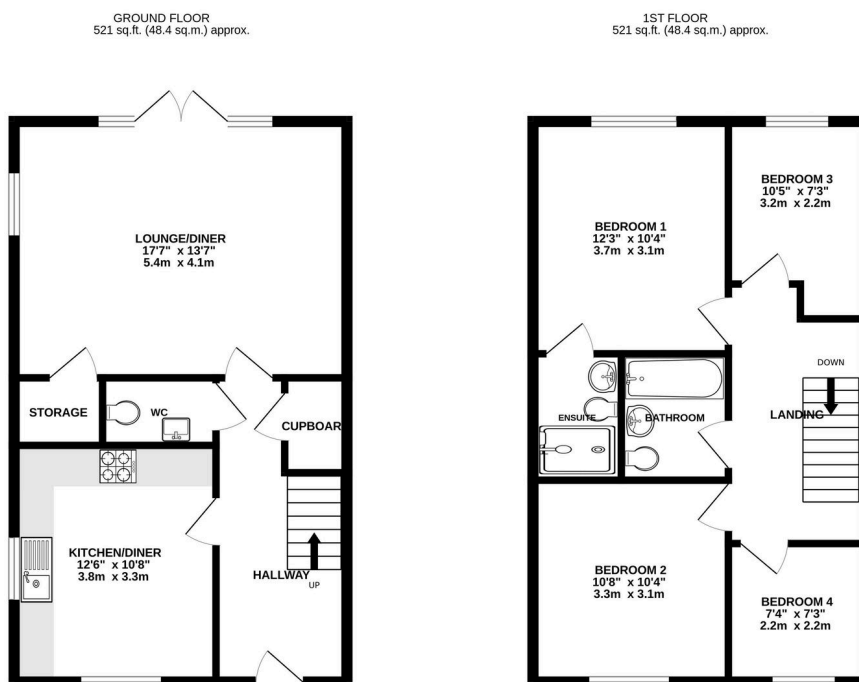
Golden Arrow Way, Brockworth, Gloucester, GL3 4ED

Offers Over £325,000

4 2 1



- Four bedroom semi detached house
- Large Lounge / diner with French doors opening onto the rear garden
- No onward chain
- Popular Coopers Edge location
- Master bedroom with en-suite
- Kitchen / diner with integrated appliances
- Garage and driveway
- Enclosed rear garden



TOTAL FLOOR AREA: 1043 sq.ft. (96.9 sq.m.) approx.

Whilst every attempt has been made to ensure the accuracy of the floorplan contained here, measurements of doors, windows, rooms and any other items are approximate and no responsibility is taken for any error, omission or mis-statement. This plan is for illustrative purposes only and should be used as such by any prospective purchaser. The services, systems and appliances shown have not been tested and no guarantee as to their operability or efficiency can be given.

Made with Metropix C5004

Offered for sale with No onward chain is this well proportioned four bedroom semi detached home in Coopers edge. The property boasts a large lounge / diner at the rear of the house as well as a kitchen / diner to the front. The master bedroom also features an en-suite shower room. Externally there is a garage and driveway to the rear of the house and an enclosed, low maintenance rear garden.


Property Ref ST0728

SIMON THOMPSON



@ simon.thompson@exp.uk.com

 simonthompson.exp.uk.com

 07879 656 288