

Westover Road, Callington, PL17

Guide Price £370,000

🛏 2 🍷 2 🛋 2



A light and spacious detached bungalow situated within a generous-sized plot on the ever popular Westover Road. The property benefits from a private driveway with a garage, a south facing garden and no onward chain.

Callington is a charming Cornish town located within a prime location in South East Cornwall and just 15 miles from Plymouth City Centre. The Town benefits from a range of facilities including a health centre, sports centre/gym, supermarkets, church and both primary and secondary schools. The area provides some idyllic countryside walks with Cotehele estate and house, Kit Hill and the Tamar Valley all nearby making it an ideal place for families and individuals alike.

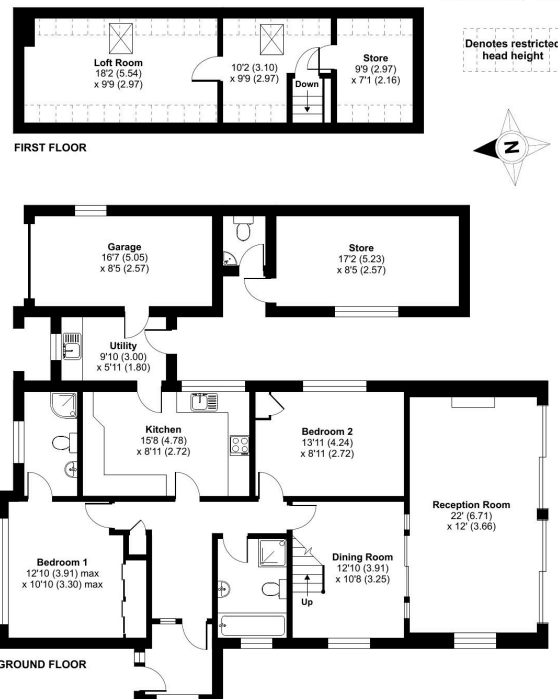
Key Features

- TO ARRANGE A VIEWING PLEASE QUOTE BL0650
- No Onward Chain
- Garage
- Spacious Accommodation
- Generous Sized-Plot
- Detached Bungalow
- Private Driveway
- South Facing Garden
- Workshop/Hobbies Room
- Modern Kitchen & Utility Room

Westover Road, Callington, PL17

Approximate Area = 1465 sq ft / 136.1 sq m
 Limited Use Area(s) = 118 sq ft / 10.9 sq m
 Garage / Store / WC = 315 sq ft / 29.3 sq m
 Total = 1898 sq ft / 176.3 sq m

For identification only - Not to scale



RICS Certified Property Measurer Floor plan produced in accordance with RICS Property Measurement Standards incorporating International Property Measurement Standards (IPMS Residential). © rickcom 2024. Produced for Ben Estates T/A Ben Langton Powered By exp. REF: 1163303