



MARC REES

exp<sup>®</sup> UK

@ marc.rees@exp.uk.com

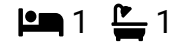
marcrees.exp.uk.com

07966 394 188



Flat 38, Regent Court, 57, Regent Street, Plymouth, PL4 8BD

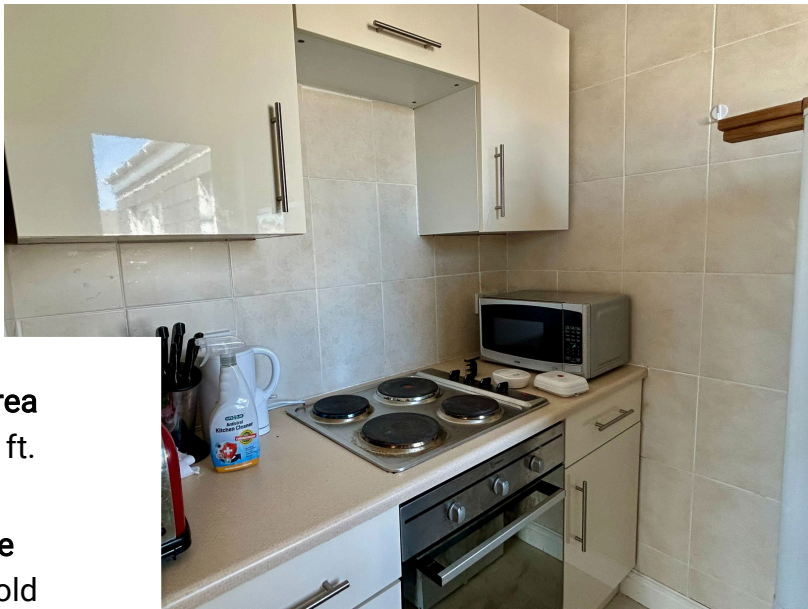
£60,000



Situated within the purpose built retirement development of "Regent Court" which is close to the City Centre, this top floor apartment has been modernised and has benefits including double glazing, entry phone system and a 24hr care line alarm system. This fantastic development has a wide range of facilities including a house manager, shared laundry facility, residents' lounge, gardens, secure auto remote entry system and a guest suite available by arrangement. The accommodation comprising a hall with storage cupboard, sitting/dining room, kitchen with a window, a double bedroom with fitted wardrobes and a modern shower room with W.C and basin. To the outside of the property there is a communal enclosed landscaped paved garden with a wonderful array of flowers and shrubs, water feature and seating area. In addition there is a utility room which has several washing machines which can be used on a rotational basis. Please quote MR0566 if making an enquiry to view the property.







**Floor Area**  
495 sq. ft.

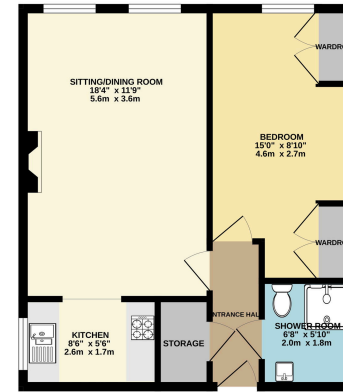
**Tenure**  
Leasehold

**Service Charge**  
£3100.32 per annum

**Ground Rent**  
£329.18 per annum



TOP FLOOR FLAT  
495 sq.ft. (46.0 sq.m.) approx.



TOTAL FLOOR AREA: 495 sq.ft. (46.0 sq.m.) approx.  
When every attempt has been made to ensure the accuracy of the floor plan and measurements, it should be noted that the floor plan and measurements are approximate and should not be used for any legal or other purposes. The actual area and measurements may vary and are subject to the ground conditions and the ground level.

