



VICTORIA BOLT

POWERED BY
exp™ UK

@ victoria.bolt@exp.uk.com

🌐 victoriabolt.exp.uk.com

☎ 07415 758 109

Kerswell Close, Ivybridge

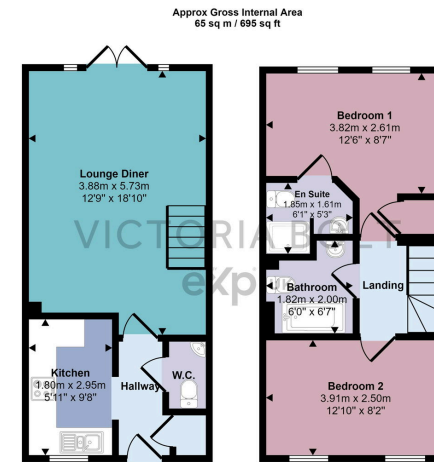
Guide Price £249,950

🛏️ 2 🚿 3 🚗 1



- Semi-detached house
- Spacious lounge/diner
- Two double bedrooms
- Off-street parking for two cars
- Great for first-time buyers or downsizing
- To arrange a viewing, please quote VB0375
- Downstairs WC
- Master bedroom offers an ensuite shower room
- Landscaped rear garden
- Desirable south-east Ivybridge





Ground Floor
Approx 32 sq m / 348 sq ft

First Floor
Approx 32 sq m / 347 sq ft

This floorplan is only for illustrative purposes and is not to scale. Measurements of rooms, doors, windows, and any items are approximate and no responsibility is taken for any error, omission or mis-statement. Icons of items such as bathroom suites are representations only and may not look like the real items. Made with Make Snappy 360.

To arrange a viewing, please quote VB0375. This 2-bedroom semi-detached home is ideal for first-time buyers or those looking to downsize. It features a downstairs WC, a fully fitted kitchen, and a spacious lounge/diner with double doors leading to a landscaped rear garden. Upstairs are two double bedrooms, one with an en-suite and storage, while a family bathroom serves the second bedroom. The exterior offers off-street parking at the front for two cars and a split-level rear garden with a patio, perfect for relaxing and entertaining.

