



ZAFER CETINEL POWERED BY **exp** TM UK

@ zafer.cetinel@exp.uk.com

zafercetinel.exp.uk.com

01242 374 844

Mill Reef Drive, Prestbury, Cheltenham, GL52 5FF

Guide Price £750,000

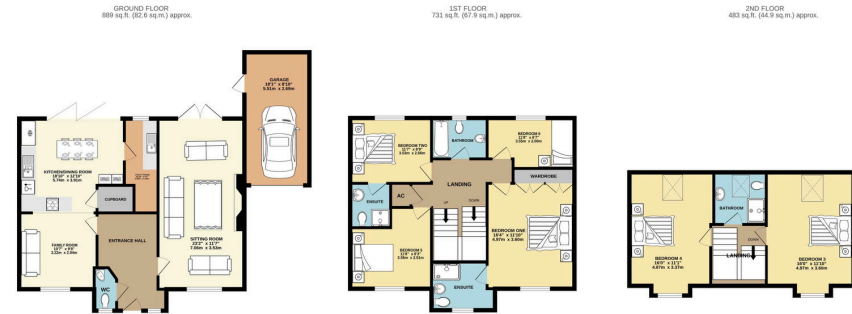
🛏️ 6 🚿 4 🚗 2

- NOVERTON LANE, PRESTBURY
- QUIET CUL DE SAC LOCATION
- PRIVATE GARDEN
- FOUR BATHROOMS
- GREAT VIEWS AT FRONT AND BACK
- GREAT SCHOOL CATCHMENT FOR ALL AGES
- GARAGE AND DRIVEWAY
- FIVE DOUBLE AND A SINGLE BEDROOM
- LARGE LIVING ROOM
- PLEASE QUOTE REF ZC 0364



This stunning detached family home in Prestbury offers the best location in the cul-de-sac. Built by George Wimpy Homes in 2007, this spacious property features a lavish entrance hall, a double-aspect lounge with modern entertainment unit, and a reconfigured kitchen with pantry and utility room. The first floor boasts four bedrooms, including a master with en-suite, while the second floor offers two additional bedrooms. The rear garden includes multiple patio areas and mature trees, with garage access. Located near Cleve Hill, this home is perfect for outdoor enthusiasts and families, with schools and amenities nearby. A must-see for those seeking a great family home.

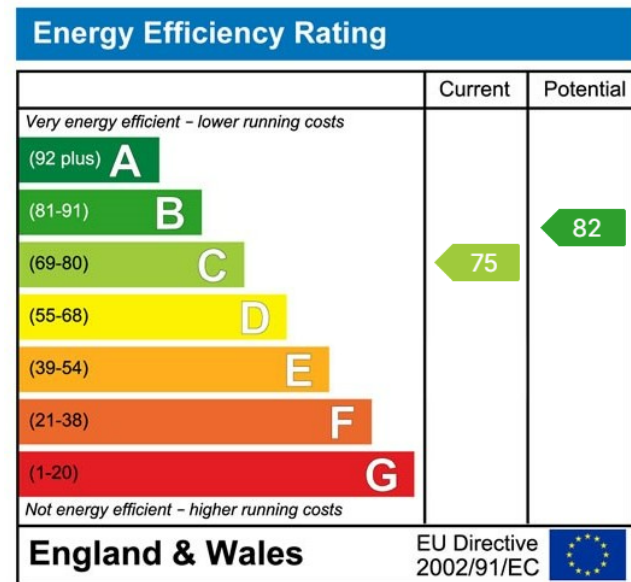




6 BEDROOM DETACHED FAMILY HOME WITH A GARAGE

TOTAL FLOOR AREA: 2103 sq ft (195.4 sq m) approx.

Whilst every attempt has been made to ensure the accuracy of the floorplan contained here, measurements of doors, windows, rooms and any other items are approximate and no responsibility is taken for any error, omission or misstatement. This plan is for illustrative purposes only and should be used as such by any prospective purchaser. The services, systems and appliances shown have not been tested and no guarantee as to their operability or efficiency can be given.
Made with Metriplan 12/2024



eXp World UK Ltd is a registered company at Level 37, 25 Canada Square, London, E14 5LQ.

Registered company number is 12016573. VAT Registration Number is 327 4120 29