

The Green, Lower Burraton, Saltash, PL12 4SQ

Guide Price £230,000

3 1 1



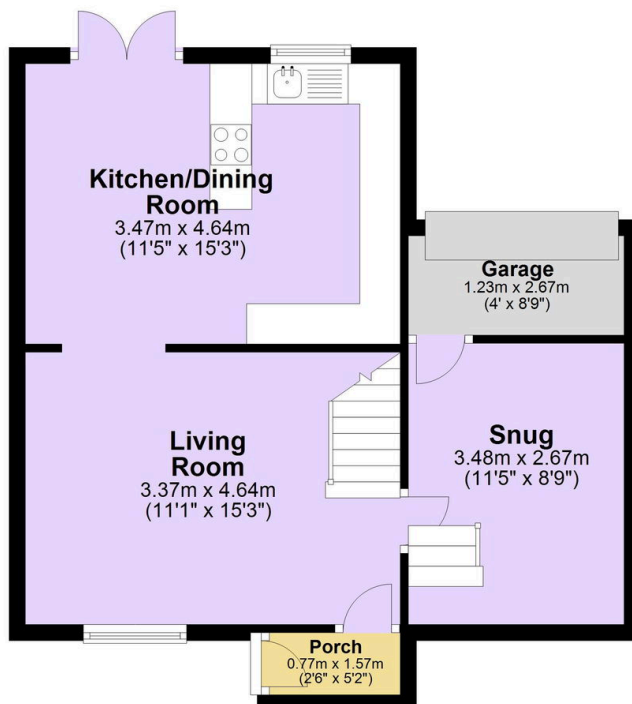
Step inside and be greeted by a warm and inviting atmosphere, with a spacious living room boasting a large window that floods the space with natural light. The newly fitted kitchen/diner has been completely transformed with brand new cabinets, worktops & built-in appliances and serves as the true gathering place with its fabulous breakfast bar, making it perfect for everyday cooking and entertaining. Upstairs, you'll find three well-proportioned bedrooms and a modern family bathroom. Outside, the private rear garden is enclosed and easy to maintain, offering a secluded oasis for alfresco dining & entertaining. Other highlights include a single integral garage that has been halved into a cosy snug room/utility room, a handy porch, and off-road parking available.

Key Features

- Freehold - Council Tax Band B - EPC TBC
- End Of Terrace Home
- Three Well-Proportioned Bedrooms
- Brand New Kitchen
- Spacious Living Room
- Modern Family Bathroom
- Integral Single Garage - Half Converted Into A Snug Room
- Private Rear Garden
- Off-Road Parking Available
- Quote BH0675 To Book A Viewing

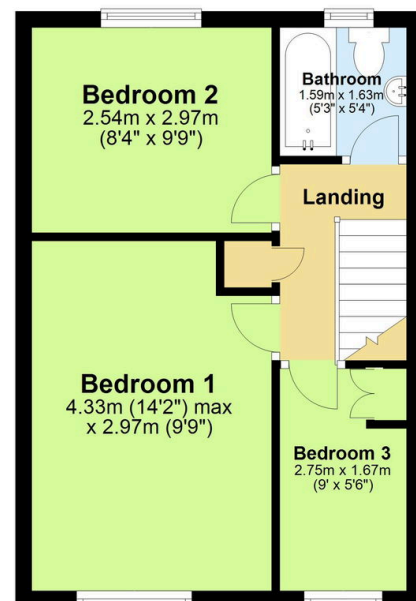
Ground Floor

Approx. 46.9 sq. metres (504.7 sq. feet)



First Floor

Approx. 32.3 sq. metres (347.7 sq. feet)



Total area: approx. 79.2 sq. metres (852.4 sq. feet)