



LEE WEBB

exp<sup>®</sup> UK

@ lee.webb@exp.uk.com

leewebb.exp.uk.com

07877 586 173



Yew Tree Close, Quedgeley, Gloucester, GL2 4NG

£475,000

5 3 1



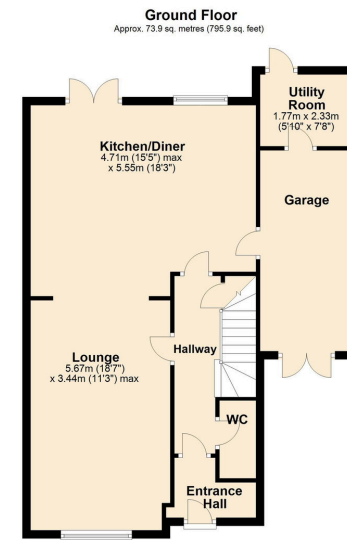


- REF - LW0607
- 2 x En-suites
- Cul-De-Sac Location
- Utility Room and W.C
- 5 Bedrooms
- Garage And Parking
- Beautiful Kitchen/Diner
- Modern Style Home





This modern 5-bedroom detached home in Quedgeley offers the perfect blend of style, space, and convenience. Located in a quiet cul-de-sac, this property is ideal for families seeking a peaceful setting with easy access to local amenities and transport links. REF - LW0607



Total area: approx. 165.9 sq. metres (1785.3 sq. feet)

This floorplan is for illustrative purposes only and is not to scale. Where measurements are shown they are approximate and should not be relied on. No liability is accepted in respect of any consequential loss arising from the use of this plan.  
Plan produced using PlanUp.

