

Mollison Road, Plymouth, PL5

Guide Price £300,000

3 1 1



A light and spacious three double bedroom family home located within a popular residential area. The property offers comfortable and practical accommodation for both entertaining and family life.

Situated within the popular residential area of higher St Budeaux and just 3 miles from Plymouth city centre, the property is ideally located within walking distance of the local amenities, schools and train stations. There are also regular bus services that provide easy access to Plymouth and the surrounding areas.

Key Features

- TO ARRANGE A VIEWING PLEASE QUOTE BL0650
- Three Double Bedrooms
- Private Driveway
- Extension Potential
- Good-Sized Garden
- Semi-Detached
- Family Bathroom & Downstairs Cloakroom
- Garage
- Popular Residential Area
- Freehold

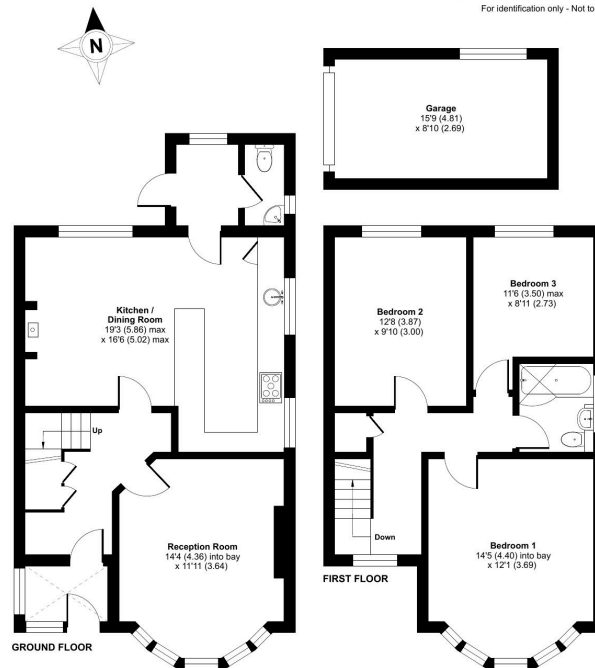
Mollison Road, Plymouth, PL5

Approximate Area = 1155 sq ft / 107.3 sq m

Garage = 139 sq ft / 12.9 sq m

Total = 1294 sq ft / 120.2 sq m

For identification only - Not to scale



Floor plan produced in accordance with RICS Property Measurement Standards incorporating International Property Measurement Standards (IPMS2 Residential). © rickshcom 2024. Produced for Ben Estates TA Ben Langton Powered By exp. REF: 117201