

## Fernleigh Terrace, St Anns Chapel, PL18

Guide Price £250,000

3 1 2



A three-bedroom character cottage offering an abundance of charm and period features throughout. The property benefits from beautiful views over the Tamar Valley and a large south-facing garden.

Situated within the village of St, Anns Chapel and approximately 4 miles away from Callington and 6 miles from Tavistock. Amenities within the area include a convenience store with a petrol station, primary schools, pubs and a train station with regular trains to and from Plymouth.

## Key Features

- TO ARRANGE A VIEWING PLEASE QUOTE BL0650
- Three Bedrooms
- Character Cottage
- Summer House/Workshop
- Reception Room
- Countryside Views
- Large South-Facing Garden
- Period Features
- Kitchen/Dining Room
- Freehold

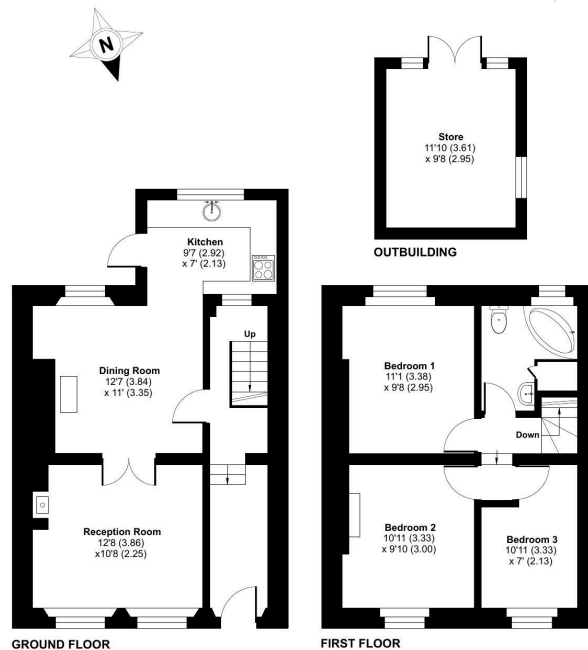
### Fernleigh Terrace, St. Anns Chapel, Gunnislake, PL18

Approximate Area = 863 sq ft / 80.1 sq m

Outbuilding = 114 sq ft / 10.5 sq m

Total = 977 sq ft / 90.6 sq m

For identification only - Not to scale



Floor plan produced in accordance with RICS Property Measurement Standards incorporating International Property Measurement Standards (IPMS2 Residential). © ncbcom 2024. Produced for Ben Estates TA Ben Langton Powered By exp. REF: 1165109