



LEE WEBB

exp[®] UK

@ lee.webb@exp.uk.com

leewebb.exp.uk.com

07877 586 173

Bristol Road, Cambridge, Cambridge, GL2 7BD

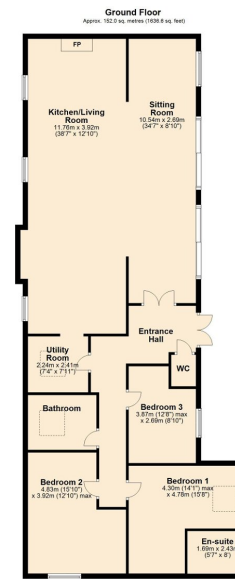
£650,000

3 2 1



- REF - LW0607
- 3 Bedrooms
- Stunning Open Plan Living
- Underfloor Heating
- Barn Conversion
- En-Suite
- Converted in 2021
- Curtilage listed





Situated in the picturesque hamlet of Cambridge in Gloucestershire, this stunning three-bedroom detached barn conversion exudes charm and modern luxury. Converted in 2021, the property seamlessly blends contemporary living with rustic elegance. Upon entering, you are welcomed into a spacious entrance hall, which provides access to a convenient W.C., a well-equipped utility room, and three generously sized bedrooms and the family bathroom. The master bedroom features a luxurious en-suite bathroom, perfect for unwinding after a long day. REF - LW0607

