



ELMI COURT

MARC REES

exp[®] UK

@ marc.rees@exp.uk.com

marcrees.exp.uk.com

07966 394 188

Elim Court, Elim Terrace, Peverell, Plymouth, PL3 4QB

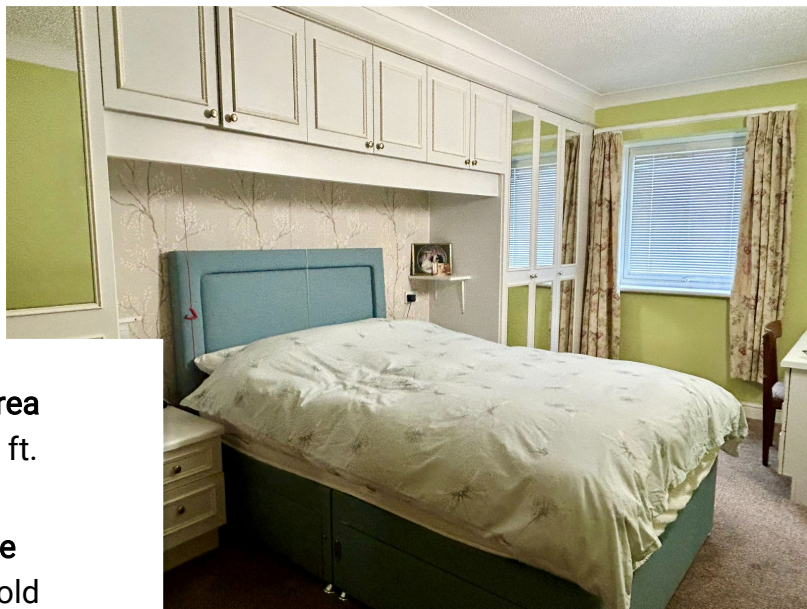
£130,000

2 1



Elim Court a purpose built retirement complex set within the heart of Peverell which is close to parks and bus routes providing easy access into the vibrant City Centre. This ground floor apartment has spacious accommodation comprising of a hall with storage cupboard, lounge/diner with a bay window and French doors providing external access, the well equipped kitchen has been remodelled to provide an integral fridge/freezer, oven, hob and combi microwave/grill. In addition there are two bedrooms both with fitted wardrobes and the shower room has been adapted to provide easy access into the shower enclosure. There are communal gardens, parking and visitors spaces on a first come first served basis and this property is being sold with no onward chain. Please quote MR0566.





Floor Area
589 sq. ft.

Tenure
Leasehold

Service Charge
£4277.76 per annum

Ground Rent
£318.14 per annum



Communal Residents Garden

GROUND FLOOR
589 sq.ft. (54.7 sq.m.) approx.



TOTAL FLOOR AREA: 589 sq.ft. (54.7 sq.m.) approx.
While every effort has been made to ensure the accuracy of the floor plan, the dimensions of the rooms shown are for guidance only and should not be relied upon for any specific purpose. The actual room and apartment areas may vary and are subject to the final floor plan.

