



ADAM HALLIWELL POWERED BY **exp** TM UK

@ adam.halliwell@exp.uk.com

adamhalliwell.exp.uk.com

01242 906 586

Courtiers Drive, Bishops Cleeve, Cheltenham, GL52

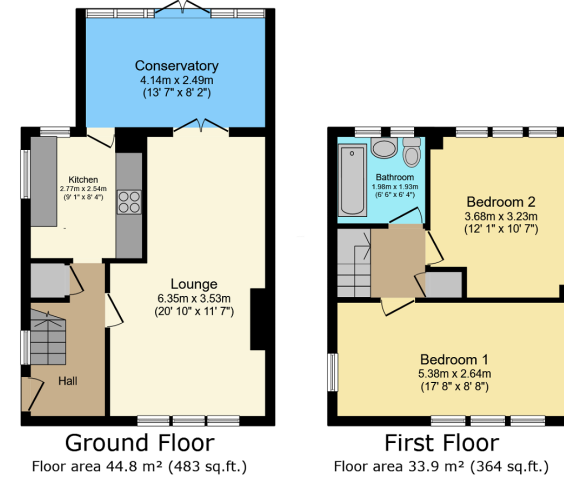
£310,000

🛏️ 2 🚿 1 🚻 1



- Please quote Ref AH0137.
- Two Double bedrooms
- Charming character semi-detached property
- Driveway for two cars
- 40' x 22' Mature rear garden
- Conservatory/garden room
- 0.3 mile walk to the shops in the village
- Parks nearby
- Under 0.5 mile to Bishops Cleeve Academy and Cleeve senior school
- Well presented home





TOTAL: 78.7 m² (847 sq.ft.)

This floor plan is for illustrative purposes only. It is not drawn to scale. Any measurements, floor areas (including any total floor area), openings and orientations are approximate. No details are guaranteed, they cannot be relied upon for any purpose and do not form any part of any agreement. No liability is taken for any error, omission or misstatement. A party must rely upon its own inspection(s). Powered by www.Propertybox.io

This charming semi-detached property, is perfect for families or couples, boasts two spacious double bedrooms, a light-filled reception room, a pleasant mature garden with hill view, a welcoming kitchen, and convenient amenities, all within a friendly community close to schools, shops, and parks. Off road parking for two cars. Call now.



eXp World UK Ltd is a registered company at Level 37, 25 Canada Square, London, E14 5LQ.

Registered company number is 12016573. VAT Registration Number is 327 4120 29