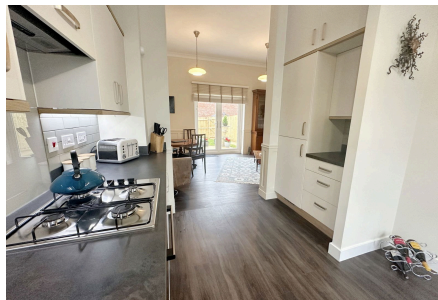


## Lyra Vale, Sherford

Guide Price £375,000

🛏️ 4 🚿 3 🚺 1

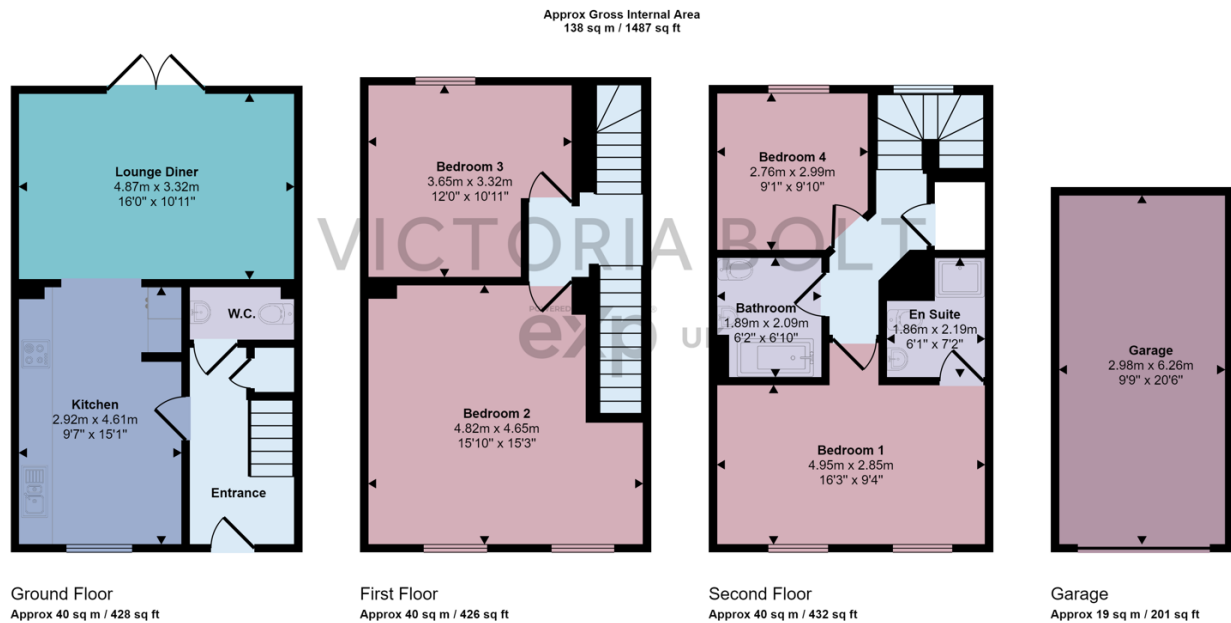


To arrange a viewing, please quote VB0375.

Nestled within the new town of Sherford is this impeccably presented townhouse that epitomizes stylish and convenient modern family living. It boasts four spacious double bedrooms, each offering an abundance of space and comfort. The master suite is a true retreat, featuring its own ensuite bathroom.

## Key Features

- To arrange a viewing, please quote VB0375
- Perfect family home
- Modern kitchen
- Downstairs WC and family bathroom on the second floor
- Close to local amenities
- Three/Four bedroom Townhouse, only 6 months old
- Master bedroom with ensuite
- Garage and off street parking
- Easy to maintain garden with shed
- Located in a popular area



This floorplan is only for illustrative purposes and is not to scale. Measurements of rooms, doors, windows, and any items are approximate and no responsibility is taken for any error, omission or mis-statement. Icons of items such as bathroom suites are representations only and may not look like the real items. Made with Made Snappy 360.