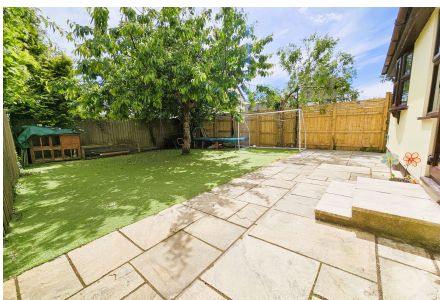


Edwards Crescent, Latchbrook

Offers Over £290,000

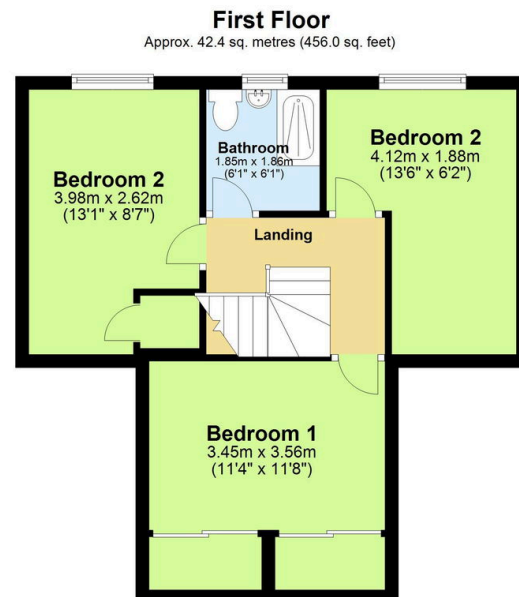
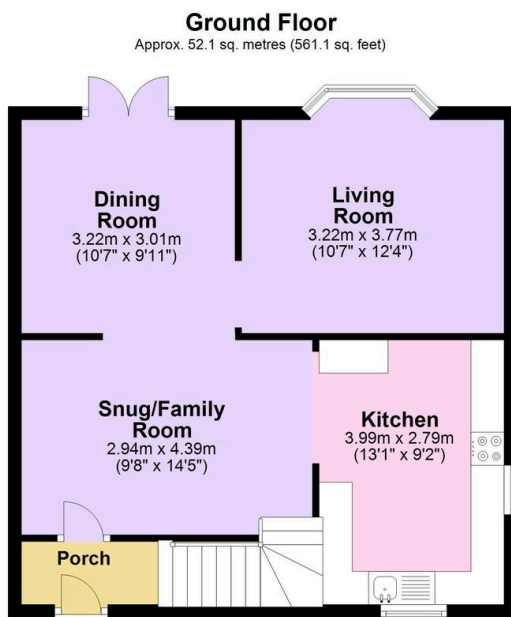
3 1 3



Step inside and be greeted by a welcoming atmosphere with the spacious family room seamlessly flowing into the dining area, boasting a thoughtful layout and abundant natural light from the two skylights. The kitchen has been completely transformed with brand new cabinets, worktops & built-in appliances creating a sleek & stylish look with soft grey tones. The warm and inviting living room is spacious yet cosy and enjoys vaulted ceilings with two skylights. Upstairs, you'll find three well-proportioned bedrooms with built-in storage and a modern shower room. Outside, the generously sized private south-facing rear garden is level and easy to maintain, offering a secluded oasis for alfresco dining & entertaining.

Key Features

- Freehold- Council Tax Band C - EPC TBC
- Newly Fitted Kitchen
- Gorgeous Dining Room
- Off Road Parking
- Full Planning Consent For a Double Storey Side Extension & Second Storey Extension To The Back Of The Property
- Extended Three Bedroom Link-Detached Family Home
- Generously Sized Living Room
- Spacious Snug/Family Room
- Large Private South Facing Rear Garden
- Quote BH0675 To Book Your Viewing



Total area: approx. 94.5 sq. metres (1017.1 sq. feet)