



ZAFER CETINEL POWERED BY **exp** TM UK

@ zafer.cetinel@exp.uk.com

zafercetinel.exp.uk.com

01242 374 844

Marlborough Place, Cheltenham, GL52 6BW

Guide Price £499,500

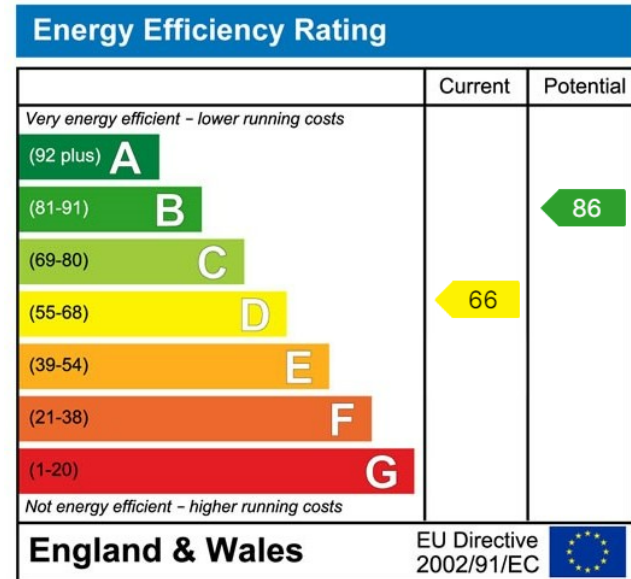
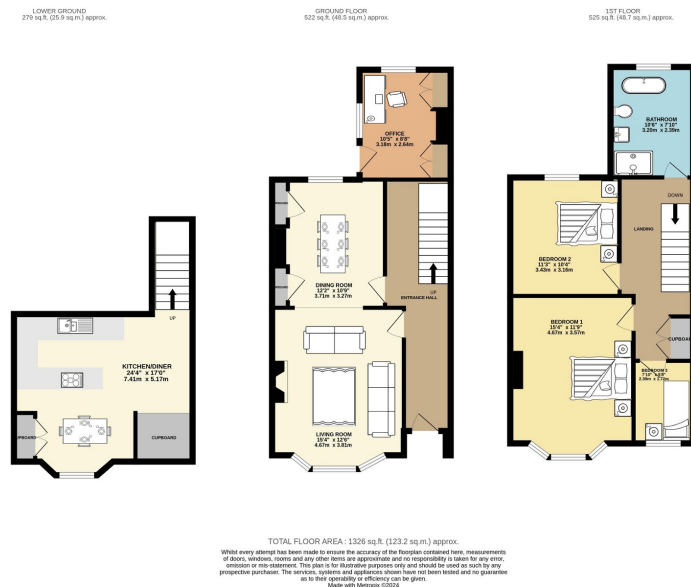
🛏️ 3 🚿 1 🚗 2



- FAIRVIEW, CHELTENHAM
- WALKING DISTANCE IN TO TOWN
- STUNNINGLY DECORATED AND REFURBISHED
- PLENTY OF VICTORIAN PERIOD FEATURES
- TWO RECEPTION ROOMS
- ENCLOSED REAR GARDEN
- OFFICE
- FOUR PIECE STYLISH BATHROOM
- ELEGANCE AT IT IS HIGHEST • PLEASE QUOTE REF ZC 0364



The impeccably refurbished Victorian terrace house, situated in the highly coveted Fairview area of Cheltenham, offers a blend of elegance and modern convenience. Ideally located within a short walking distance to the town center. Upon entering the property, you are greeted by a grand entrance hall featuring an elegant staircase that leads to the first floor. The original flooring throughout the ground floor adds a touch of charm and character to the home. The lounge, adorned with a fireplace and bay windows with exquisite shutters, exudes warmth and sophistication. The dining room, equipped with ample storage cupboards. The refurbished kitchen diner is a culinary haven, boasting solid wood worktops, plentiful storage options, and a pantry cupboard. Upstairs, the first floor accommodates two spacious double bedrooms and a cozy single bedroom. The highlight of this level is the re-fitted four-piece bathroom, a stylish shower and a freestanding bathtub.



eXp World UK Ltd is a registered company at Level 37, 25 Canada Square, London, E14 5LQ.

Registered company number is 12016573. VAT Registration Number is 327 4120 29