



SCOTT WINDLE POWERED BY **exp**™ **UK**

@ scott.windle@exp.uk.com

scottwindle.exp.uk.com

📞 07838 311 550

MacDonald Close, Melksham

Guide Price £434,950

🛏️ 4 🚿 2 🚗 2



Reference; SW0341 Beautifully presented four double bedroom property, built by Barratt Homes in their Radleigh design, pleasantly situated in a popular location on the edge of Melksham within easy access of the town, local amenities, schools and countryside. This property was the former show home for the development and offers lots of space throughout, ideal for modern day family living. You enter the property through the entrance hallway which immediately gives you a sense of space. From the hallway there are two useful storage cupboards, the stairs rising to the first floor and doors off to all the rooms. To the rear of the property is the stunning open plan kitchen / dining / family room with doors opening to the landscaped garden. This area really is the hub of the home and is perfect for family living. The kitchen area comprises a range of wall and base units with Granite worktops and built in appliances including fridge, freezer, double oven, five ring hob, dishwasher and wine cooler. Just off the kitchen is a utility room with built in washing machine and a door giving access to the side of the property. Further accommodation to the ground floor comprises the lounge with door into the dining/family area, study which could also be used as a play room, and a downstairs cloakroom. To the first floor are four double bedrooms, all with built in wardrobes, en-suite shower room to the master bedroom and a family bathroom. To the rear is a pretty, part walled, landscaped garden laid to patio and artificial grass with side access and gated rear access leading to the large single garage. In front of the garage is a driveway that provides parking for two cars. This is a perfect property for families looking for a modern, stylish home that offers spacious accommodation ready to move straight into and enjoy. An internal viewing is highly recommended.

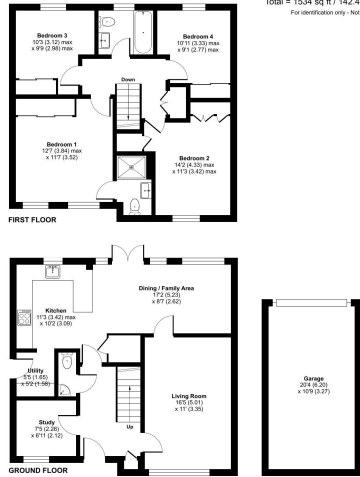
Situation

Melksham has a range of amenities including a variety of shopping, leisure facilities, library and schools. The Town has good road and rail links as well as a good bus service. Neighbouring Towns include Calne, Corsham, Devizes, Bradford on Avon, Trowbridge and Chippenham with the latter having a mainline railway station with links to London Paddington, Bath, Bristol & Swindon. The Georgian City of Bath is just a short distance away as is the M4 motorway.



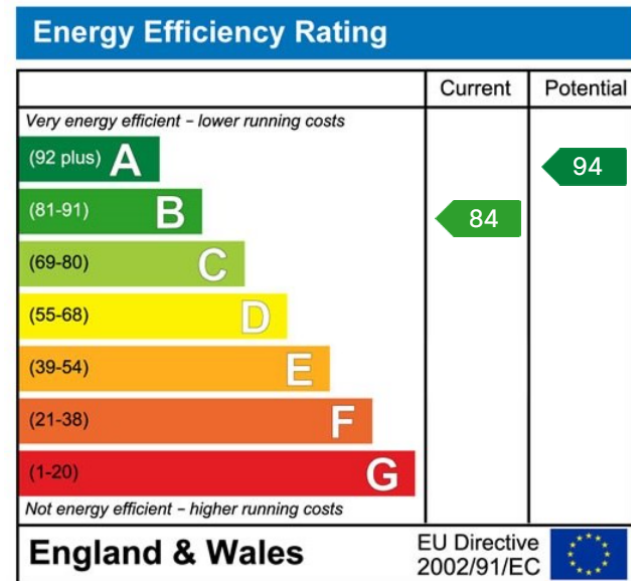
MacDonald Close, Melksham, SN12

Approximate Area = 1316 sq ft / 122.2 sq m
 Garage = 218 sq ft / 20.2 sq m
 Total = 1534 sq ft / 142.4 sq m
 For identification only - Not to scale



Plan also produced in accordance with RICS Property Measurement Standards incorporating International Property Measurement Standards (IPMS) (Accredited). On 08/08/2024. Prepared for eXp World UK Limited by eXp - REF: 1104828

- Please Quote Reference SW0341
- Former Show Home
- Stunning Kitchen / Dining / Family Room
- Four Double Bedrooms With Built In Wardrobes
- Landscaped Garden
- Radleigh Design Built By Barratt Homes
- Beautifully Presented Throughout
- Study / Play Room, Lounge & Utility Room
- Cloakroom, Family Bathroom & En-Suite Shower Room
- Large Single Garage With Driveway In Front



eXp World UK Ltd is a registered company at Level 37, 25 Canada Square, London, E14 5LQ.

Registered company number is 12016573. VAT Registration Number is 327 4120 29