

Beech Road, Callington, PL17

Guide Price £250,000

3 1 1



A three bedroom detached bungalow located in the heart of Callington and just moments away from the local amenities. The property is situated on a generous-sized plot and benefits from two parking spaces and no onward chain.

Callington is a charming Cornish town located within a prime location in South East Cornwall and just 15 miles from Plymouth City Centre. The Town benefits from a range of facilities including a health centre, sports centre/gym, supermarkets, church and both primary and secondary schools. The area provides some idyllic countryside walks with Cotehele estate and house, Kit Hill and the Tamar Valley all nearby making it an ideal place for families and individuals alike.

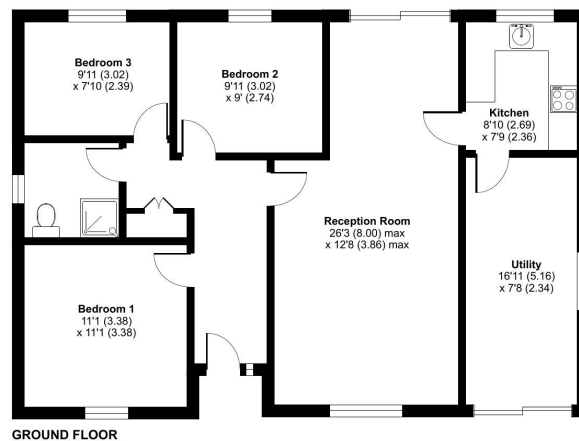
Key Features

- TO ARRANGE A VIEWING PLEASE QUOTE BL0650
- Three Bedrooms
- Private Driveway
- Close To Amenities
- Generous-Sized Plot
- Detached Bungalow
- No Onward Chain
- Spacious Reception Room
- Utility Room
- Freehold

Beech Road, Callington, PL17

Approximate Area = 986 sq ft / 91.5 sq m

For identification only - Not to scale



Floor plan produced in accordance with RICS Property Measurement Standards incorporating International Property Measurement Standards (IPMS2 Residential). © richcom 2023. Produced for Ben Estates TA Ben Langton Powered By exp. REF: 1132754.