



VICTORIA BOLT

POWERED BY
exp™ UK

@ victoria.bolt@exp.uk.com

🌐 victoriabolt.exp.uk.com

📞 07415 758 109

Turnpike Crescent, Ivybridge

Guide Price £245,000

🛏️ 2 🚿 2 🚗 1

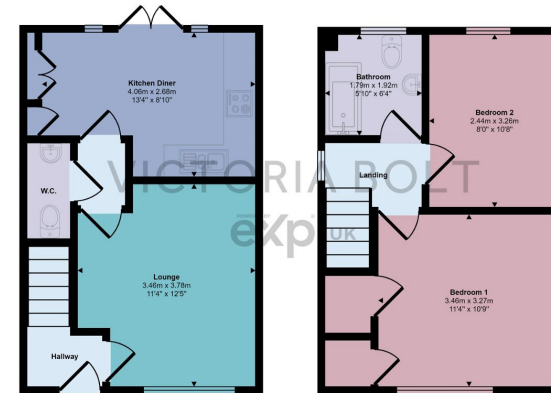


- To arrange a viewing, please quote VB0375.
- Bright and spacious accommodation
- Parking for two cars
- Convenient downstairs WC
- Excellent transport links
- Two double bedroom semi-detached family home
- Built by Barratt Homes in 2019, so still benefits from the remaining 10 year NHBC warranty
- Well maintained property
- Master bedroom with built in wardrobe
- Low maintenance garden





Approx Gross Internal Area
58 sq m / 628 sq ft



Ground Floor
Approx 29 sq m / 310 sq ft

First Floor
Approx 30 sq m / 319 sq ft

This floorplan is only for illustrative purposes and is not to scale. Measurements of rooms, doors, windows, and any items are approximate and no responsibility is taken for any error, omission or mis-statement. Icons of items such as bathroom suites are representations only and may not look like the real items. Made with Made Snappy 360.

To arrange a viewing, please quote VB0375. This lovely two-bedroom semi-detached home, constructed by Barratt Homes in 2019, provides spacious and cosy living. Situated just a mile away from Ivybridge train station, it offers convenient access to transportation.

