



VICTORIA BOLT

POWERED BY
exp™ UK

@ victoria.bolt@exp.uk.com

🌐 victoriabolt.exp.uk.com

☎ 07415 758 109

Pykes Down, Ivybridge

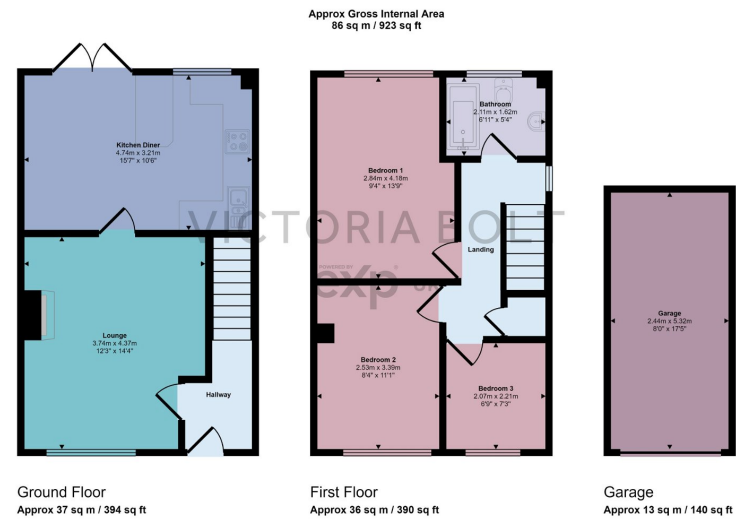
Guide Price £275,000

3 1 1



- Immaculate three bedroom home
- Generous living room & charming kitchen/diner
- Modern bathroom
- Spacious garden
- Excellent transport links
- To arrange a viewing, please quote VB0375
- Separate garage, with it's own solar panels
- Semi-detached house
- Beautiful views towards the moors and over the green
- Family-friendly environment





This floorplan is only for illustrative purposes and is not to scale. Measurements of rooms, doors, windows, and any items are approximate and no responsibility is taken for any error, omission or mis-statement. Icons of items such as bathroom suites are representations only and may not look like the real items. Made with Made Snappy 360.

This immaculate three bedroom semi-detached house features a charming shaker-style kitchen/diner that opens onto the spacious garden, boasting a delightful combination of patio, lawn, and decked areas. Nestled amidst the picturesque surroundings of Ivybridge, this home offers a lot for a growing family. The town offers an array of amenities, including charming pubs, eateries, shops, and supermarkets, all within easy reach.

