



BRYONY HINE

POWERED BY
exp UK

📞 07429659268

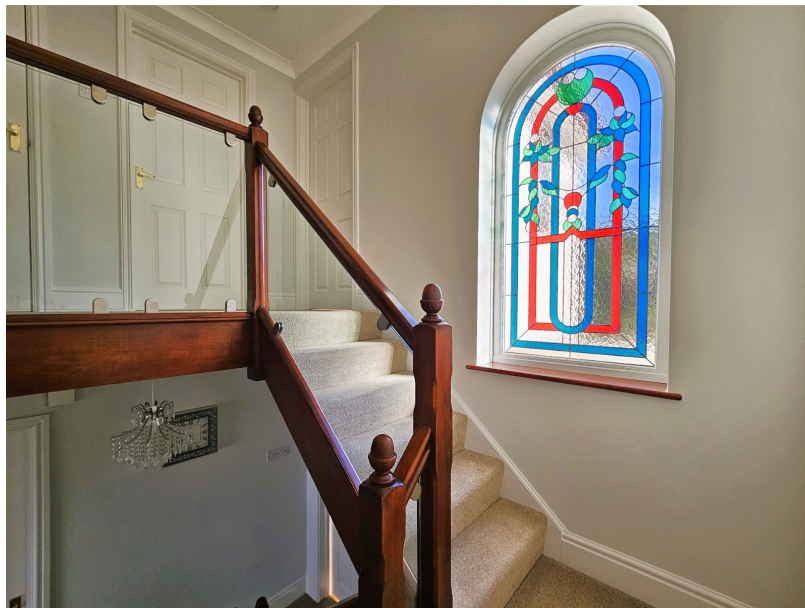
@ bryony.hine@exp.uk.com

🌐 www.bryonyhine.exp.uk.com

Carey Court, Saltash

Offers In Region Of £595,000

5 3 3



- Freehold - Council Tax Band F - EPC TBC
- Three Bathrooms
- Generously Sized Separate Dining Room
- WC On Every Floor
- Large Integral Garage & Off-Road Parking For Multiple Vehicles
- Detached 5 Bedroom Home Plus Annexe
- Wonderful Sized Kitchen With Built-In Appliances
- Spacious Living Room With Doors Leading Out To Decked Garden
- Easy To Maintain Garden With New Composite Decking
- Quote BH0675 To Book Your Viewing Today





This stunning five bedroom detached property of individual design offers over 2,250 square feet of fabulous living space across three floors. As you step inside the welcoming entrance hall, you're enveloped in a feeling of openness and charmed by it's light and airy atmosphere. This exceptional home is perfect for multi-generation living with the ground level accommodating a double bedroom, en-suite shower room, built-in wardrobes & storage, along with a superb open-plan, kitchen, lounge/dining room, which has previously been utilised as a self-contained annexe! The substantial property has an impressive list of features that include; a wonderful modern kitchen with built-in appliances, generously sized separate dining room flowing into the spacious living room with patio doors leading out to the newly decked garden!

