



SIMON THOMPSON

exp<sup>®</sup> UK

@ [simon.thompson@exp.uk.com](mailto:simon.thompson@exp.uk.com)

 [simonthompson.exp.uk.com](http://simonthompson.exp.uk.com)

 07879 656 288



Rivershill, St. Georges Rd, Cheltenham

£500,000

🛏️ 2 🪑 2 🚗 1



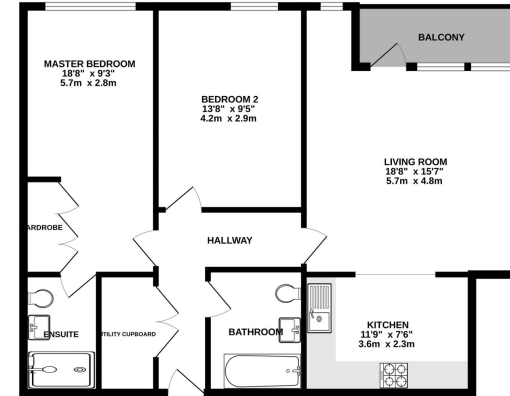


- Sensational Two Bedroom, Third Floor Apartment in Highly Desirable "Rivershill"
- Balcony with Views Towards Cleeve Hill
- Master Bedroom with Built in Wardrobes and En-Suite
- Underfloor Heating in Bathroom and En-suite
- Allocated Parking
- Town Centre Location Just A Short Walk to Trendy Montpellier
- Kitchen with "Neff" Integrated Appliances and Quartz stone Worktops
- Engineered Oak Flooring in Hallway, Living Area and Kitchen
- Residents Fitness Suite
- Property Ref ST0728





GROUND FLOOR  
864 sq.ft. (80.2 sq.m.) approx.



TOTAL FLOOR AREA - 864 sq.ft. (80.2 sq.m.) approx.  
Weed energy efficiency has been used to estimate the accuracy of the Energy Performance Certificate (EPC) rating. It is not a guarantee of the actual energy performance of the property. The EPC rating is an estimate and is based on the information provided to us. It is not a guarantee of the actual energy performance of the property. It is not a guarantee of the actual energy performance of the property. It is not a guarantee of the actual energy performance of the property.

Rivershill is a beautiful collection of apartments and penthouses situated in the heart of historic Cheltenham, a stone's throw from sophisticated Montpellier with its array of boutique shops and restaurants. This specific apartment is a stunning two bedroom, third floor apartment with a private balcony providing far reaching views across Cheltenham and towards Cleeve Hill. Finished to the very highest spec including integrated "Neff" appliances in the kitchen, electric blinds and underfloor heating in the bathroom and en-suite. Property Ref ST0728

