



DARYL HILL POWERED BY **exp** <sup>TM</sup> UK

@ daryl.hill@exp.uk.com

🌐 darylhill.exp.uk.com

☎ 07921 060 390

270 Painswick Road, Matson

£210,000

🛏️ 2 🚿 1 🚗 1

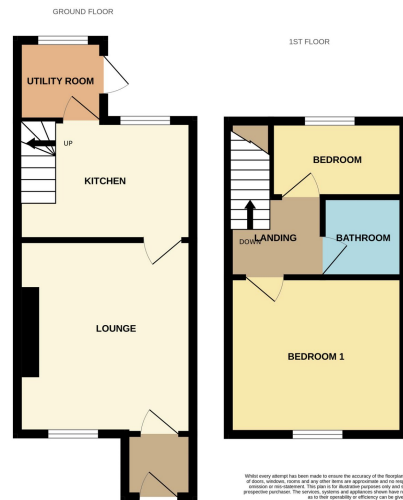


- PERIOD TERRACED COTTAGE
- LIVING ROOM WITH WOODBURNER
- ATTRACTIVE REAR GARDEN
- FIRST FLOOR BATHROOM
- FULL OF CHARACTER AND CHARM
- 2 BEDROOMS
- FITTED KITCHEN WITH RANGE STYLE COOKER
- OFF ROAD PARKING TO FRONT
- WELL LOCATED FOR LOCAL AMENITIES
- REF DH0109



REF DH0109; A delightful period cottage located on the outskirts of City on Painswick Road. The home offers character in abundance and whilst perhaps not big, nor perfectly formed, is blessed with huge charm and appeal. The home offers a cosy reception room with feature fireplace with inset woodburning stove, an essential for those cold winter evenings. Behind the reception room is a fitted kitchen with views towards the garden, a range style cooker and attractive revealed stonework. The kitchen is complemented by a utility area. The first floor offers a double bedroom to front, a bathroom and a second smaller bedroom/office.

The frontage offers off road parking and the rear a terraced garden with useful garden room.



While every attempt has been made to ensure the accuracy of the floorplan contained herein, measurements of rooms, windows, doors and all other items are approximate and no responsibility is taken for any error, omission or misstatement. The floor plan should be used as a guide only and should not be relied upon as to the quantity or efficiency of any given item.

Score	Energy rating	Current	Potential
92+	A		92 A
81-91	B		
69-80	C	69 C	
55-68	D		
39-54	E		
21-38	F		
1-20	G		