



ADAM HALLIWELL POWERED BY **exp** TM UK

@ adam.halliwell@exp.uk.com

adamhalliwell.exp.uk.com

01242 906 586

Denley Close, Bishops Cleeve, Cheltenham, GL52

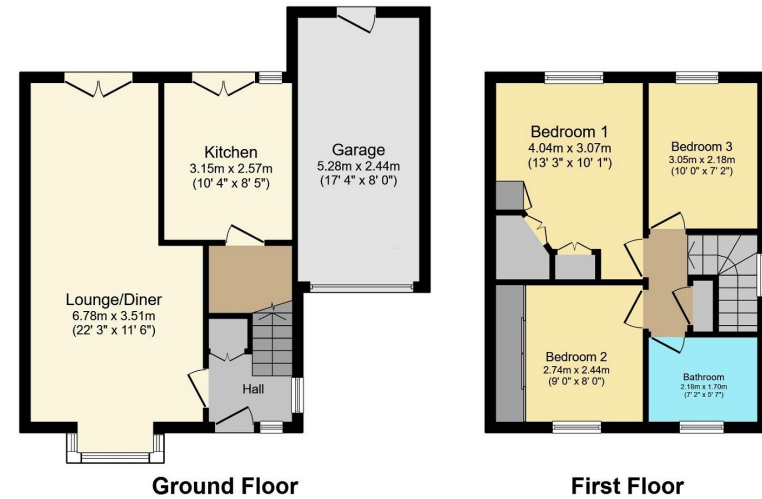
£375,000

3 1 1



- Please quote ref AH0137
- Three bedrooms
- Garage
- Driveway for two cars
- Cul de sac location
- Well presented
- 39' x 36' Rear garden
- Kitchen with fitted appliances
- Large third bedroom (10' x 7'2)
- Less than a mile to schools and the village





Total floor area 85.1 sq.m. (916 sq.ft.) approx
 This plan is for illustration purposes only and may not be representative of the property. Plan not to scale. Powered by PropertyBox

This charming three-bedroom detached property in Cleeve offers a spacious open-plan reception room, well-appointed kitchen, westerly facing rear garden, and desirable location close to green spaces and schools. With a garage and driveway its the perfect family home. Call now

