

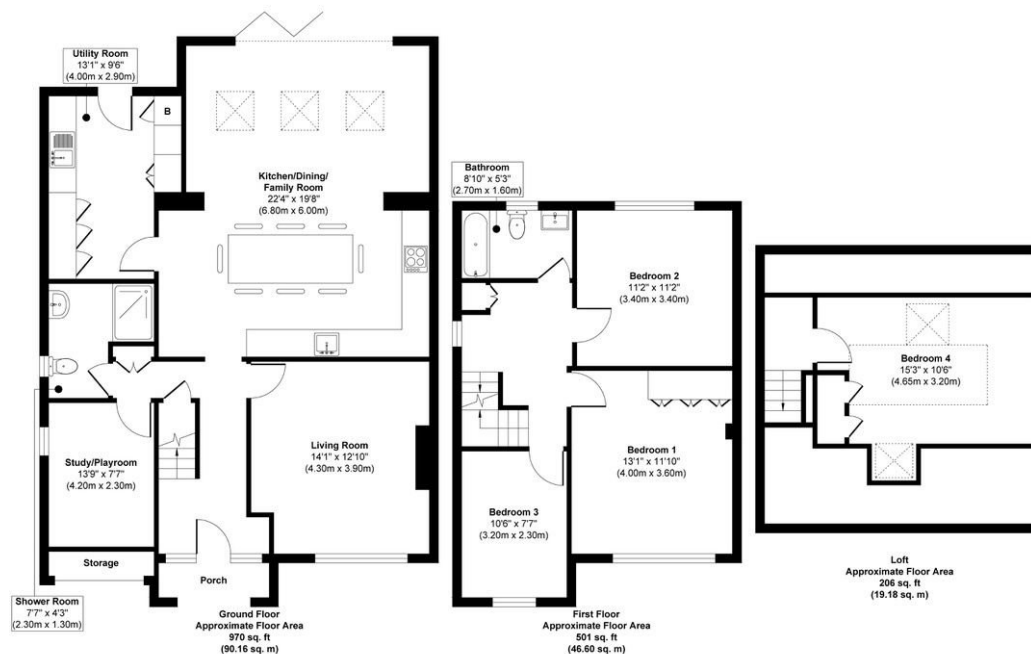
35 Round Barrow Close,
Offers Over £650,000

4 2 2



- Highly regarded Colerne village
- Located between Bath City centre and M4
- Superbly proportioned four bedroom family home
- Two bath/shower rooms
- Living room with feature stone fireplace and open fire
- Loft conversion
- Stunning Kitchen/Dining/Family room with adjoining veranda
- Large rear garden
- Ample parking
- PROPERTY REFERENCE SL 0822

35 Round Barrow Close, Colerne, Chippenham SN14 8EF



Approx. Gross Internal Floor Area 1677 sq. ft / 155.94 sq. m
Illustration for identification purposes only, measurements are approximate, not to scale.

An exceptional, superbly proportioned family home with large garden, in an open position at the end of a no through road close to the heart of popular Colerne Village