

# Courtyard Flat

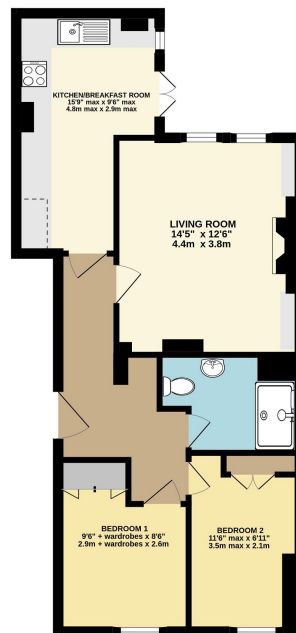
Guide Price £450,000

2 1 1



- Prime City centre location
- Exceptional Georgian garden square
- Grade II Listed conversion flat
- Two double bedrooms
- Elegant, spacious Living/Dining room
- Kitchen breakfast room with access to private patio
- 977 year Lease plus share of Freehold
- Vault storage plus use of communal gardens
- Permit parking
- PROPERTY REFERENCE SL 0822

LOWER GROUND FLOOR



Whilst every attempt has been made to ensure the accuracy of the floorplan contained here, measurements of doors, windows, rooms and any other items are approximate and no responsibility is taken for any error, omission or misstatement. This plan is for illustrative purposes only and should be used as such by any prospective purchaser. The services, systems and apparatus shown here has not been tested and no guarantee as to their operability or efficiency can be given.  
Made with floorplan ©2021

A well equipped and highly appealing two double bedroom courtyard flat, listed Grade II and situated in in one of the prime locations in the heart of the City centre