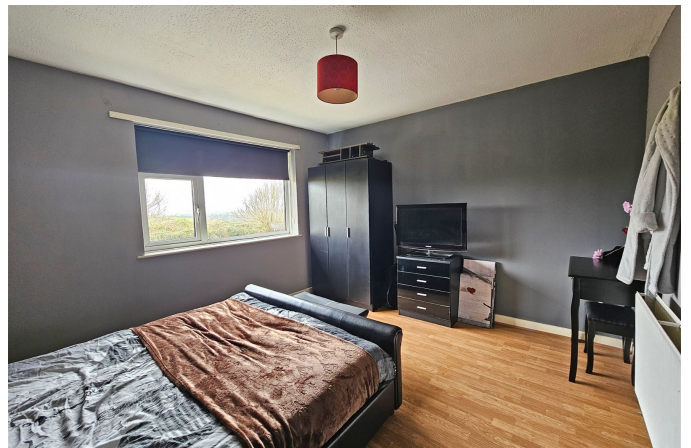


Your Logo

Four Winds, Bodmin, PL30 4HH

£279,999

🛏️ 5 🚿 2 🚗 2



Your Logo

- Five Bedroom Detached Bungalow
- Off Road Parking
- Enclosed Rear Garden
- Approx 1550 Sq Ft
- Countryside Views to the Front Aspect
- Versatile Accommodation
- Call Now to View - Quote Ref. PM0522
-
-

GROUND FLOOR
1310 sq.ft. (121.7 sq.m.) approx.



TOTAL FLOOR AREA: 1310 sq.ft. (121.7 sq.m.) approx.
Whilst every attempt has been made to ensure the accuracy of the floorplan contained here, measurements of doors, windows, rooms and any other items are approximate and no responsibility is taken for any error, omission or mis-statement. This plan is for illustrative purposes only and should be used as such by any prospective purchaser. The services, systems and appliances shown have not been tested and no guarantee as to their operability or efficiency can be given.
Made with Metropix ©2024

| QUOTE REFERENCE PM0522 | FIVE BEDROOM DETACHED BUNGALOW | OFF ROAD PARKING | APPROX. 1550 SQ FT |