



VICTORIA BOLT

POWERED BY
exp™ UK

@ victoria.bolt@exp.uk.com

🌐 victoriabolt.exp.uk.com

📞 07415 758 109

Manor Close, Ivybridge

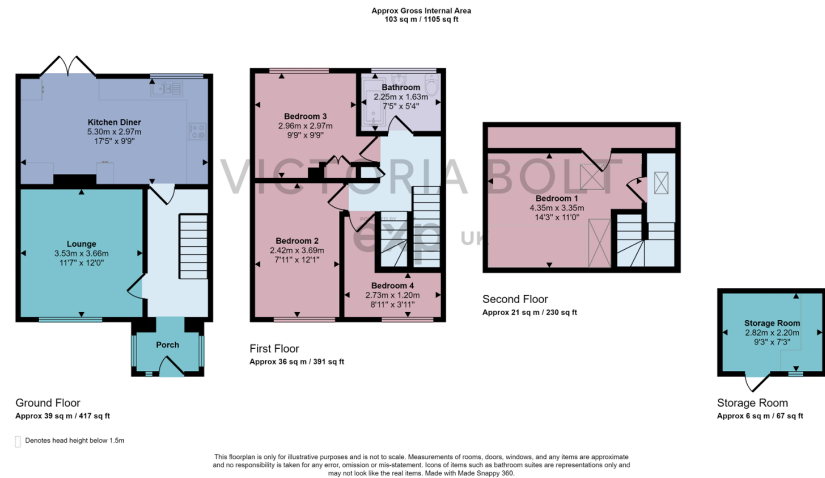
Guide Price £229,950

🛏️ 3 🚿 1 🚗 1



- Terraced house in Ivybridge
- To arrange a viewing, please quote VB0375
- Good size lounge
- Modern kitchen/diner
- Three bedrooms (2 dbls; 1sng)
- Loft room
- Low maintenance rear garden
- Brick built storage shed
- On street parking
- Short walk to local amenities including Manor Primary School rated 'Outstanding by Ofsted'





To arrange a viewing, please quote VB0375. This terraced house is situated in Manor Close, Ivybridge. The accommodation comprises a lounge, kitchen/diner, three bedrooms, a family bathroom, and a loft room. The property has a good-sized rear garden with a brick-built shed for storage. There is ample on-street parking available. The property is a short walk from Manor Primary School.

