



BRYONY HINE

POWERED BY
exp UK

📞 07429659268

@ bryony.hine@exp.uk.com

🌐 www.bryonyhine.exp.uk.com

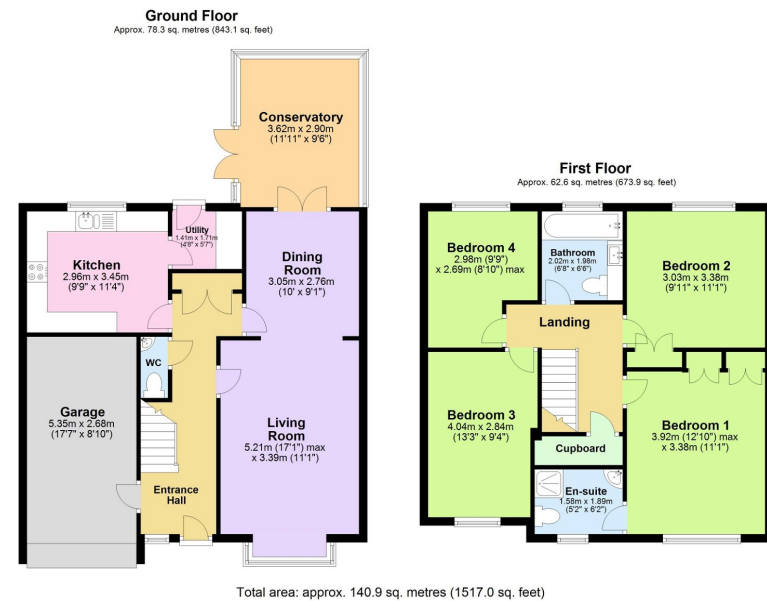
Latchbrook, Saltash
Guide Price £455,000

4 2 3



- Freehold - EPC C - Council Tac Band E
- Beautiful Detached Family Home
- Driveway Parking for Several Cars
- 4 Good-Sized Bedrooms
- En-suite Shower Room
- Spacious Kitchen & Utility Room
- Fabulous Sized Lounge With Bay Window
- Dining Room & Conservatory
- Located In A Private Road
- Quote BH0675 To Book Your Viewing





A wonderful opportunity to acquire a beautiful family home, situated within a private cul-de-sac of executive properties. This lovely detached home has off-road parking for multiple vehicles and four good-sized bedrooms, with a fab en-suite shower room! The property also enjoys an abundance of features that include; a spacious kitchen & utility room, fabulous sized lounge with bay window, dining room and conservatory, modern family bathroom, integral single garage and more! This wonderful property is light and airy throughout and is only a short walk to Burraton Primary School, Latchbrook Farm, the local Spar shop & other amenities. This home offers something truly unique in the current marketplace so call today to book your viewing!

Score	Energy rating	Current	Potential
92+	A		
81-91	B		82 B
69-80	C	71 C	
55-68	D		
39-54	E		
21-38	F		
1-20	G		