

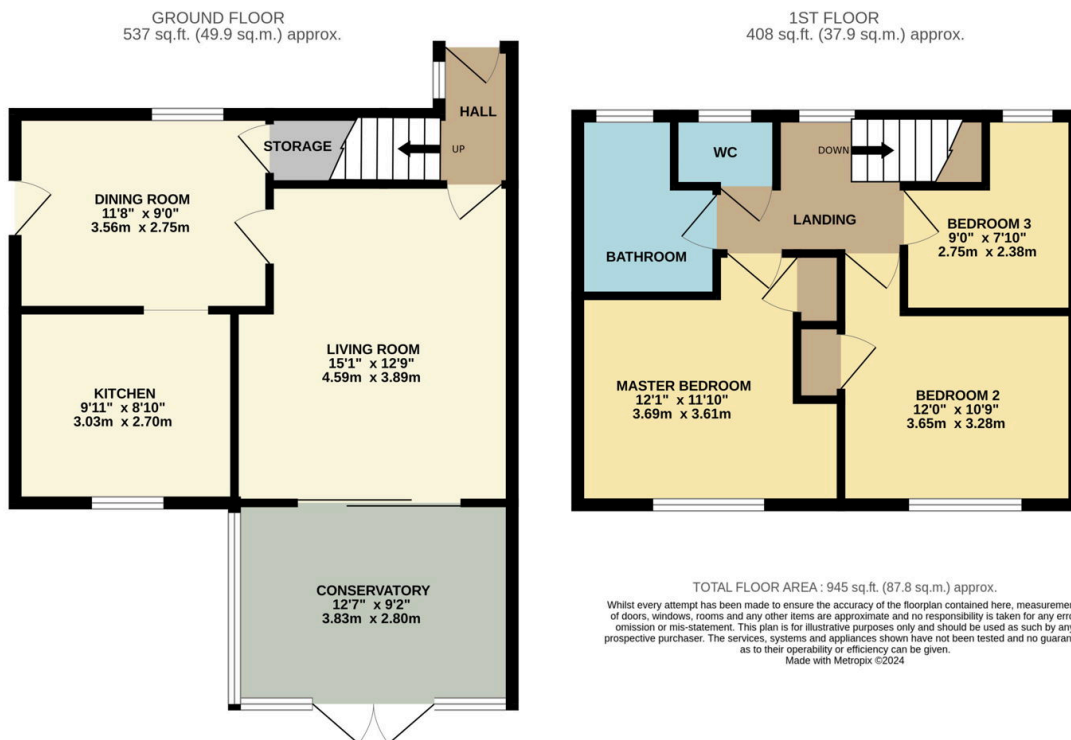
## Matson Avenue, Matson, Gloucester, GL4 6LQ

£200,000

3 1 2



- END OF TERRACE HOME
- TWO RECEPTION ROOMS
- BATHROOM AND SEPARATE WC
- LARGE REAR GARDEN
- IDEAL FIRST TIME BUY OR INVESTMENT
- THREE BEDROOMS
- MODERN KITCHEN
- UPVC DOUBLE GLAZED CONSERVATORY
- OFF ROAD PARKING FOR TWO CARS
- REF DH0109



REF DH0109; A well presented end of terrace three bed home offered for sale with off road parking and a large rear garden. The home has been well maintained by the current owner and provides spacious accommodation of three bedrooms, bathroom and separate WC on the first with the ground floor offering a large living room, uPVC conservatory, separate dining room and modern kitchen. Moving outside the rear garden is generously proportioned with an area of patio,

and expanse of lawn leading to a storage shed. The rear garden has gated side access to the front which provides driveway parking for two cars.