

South Down Road, Plymouth

Guide Price £295,000

🛏 3 🚿 2 🚗 2

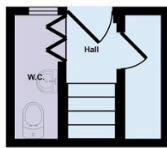


NO ONWARD CHAIN. This semi-detached house is situated in Beacon Park, Plymouth. The property offers a lounge, dining room, study (bedroom 4), modern kitchen, downstairs WC, three bedrooms and a family bathroom. The house is conveniently located near local amenities, transport links and the city centre. Off-road parking is freely available at the front and a level garden at the rear.

Key Features

- No onward chain
- To arrange a viewing, please quote VB0375
- Modern kitchen/breakfast room
- Three good sized bedrooms
- Downstairs WC
- Semi detached house in Beacon Park
- Lounge with bay window and woodburner
- Study/Playroom or 4th bedroom
- Modern family bathroom with separate shower and bath
- Level lawned garden at the rear

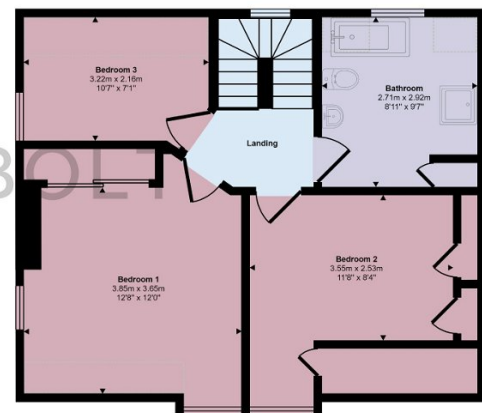
Approx Gross Internal Area
116 sq m / 1247 sq ft



Lower Ground Floor
Approx 5 sq m / 58 sq ft



Ground Floor
Approx 58 sq m / 620 sq ft



First Floor
Approx 53 sq m / 570 sq ft

Denotes head height below 1.5m

This floorplan is only for illustrative purposes and is not to scale. Measurements of rooms, doors, windows, and any items are approximate and no responsibility is taken for any error, omission or mis-statement. Icons of items such as bathroom suites are representations only and may not look like the real items. Made with Made Snappy 360.