



DARREN BLOWER

exp[®] UK

@darren.blower@exp.uk.com

darrenblower.exp.uk.com

07778 643 090

Pentire, Churchtown, St. Minver

Guide Price £795,000

🛏️ 3 🚿 2 🚗 1



- Cornish features newly built detached house Ref: DB0795
- Stunning light flooded open plan living area
- Central contemporary wood burning stove
- Fabulous kitchen fitted with high quality AEG appliances
- Three Bedrooms, 2 Bathrooms (1 en-suite)
- Feature balcony off Master Bedroom
- Airsource heat pump under floor heating throughout
- Utility/Boot Room
- Driveway for 3 vehicles
- Rear Enclosed Garden and Patio Areas

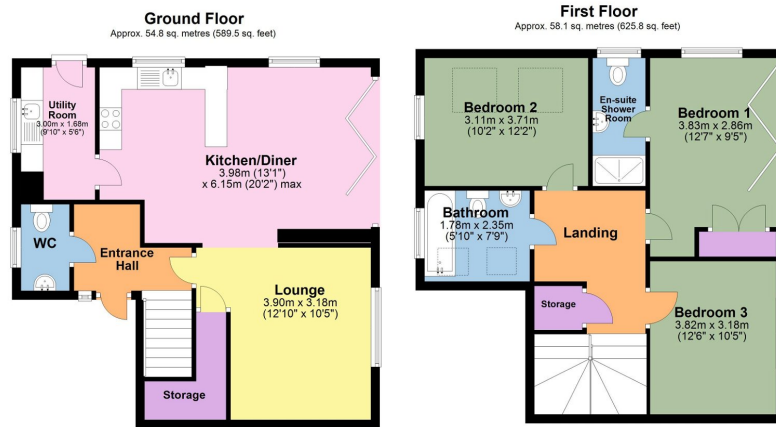


Ref: DB0795 We are delighted to bring to the market this beautifully appointed, newly built detached property aptly named Pentire, as the essence of a home highly built with traditional Cornish materials.

The natural light floods through the stunning open plan living area with the central contemporary wood burning stove creating a cosy ambiance throughout the fabulous superior kitchen, tasteful dining area and inviting sitting room.

Stairs lead to three generous bedrooms, an elegant good sized family bathroom and a linen cupboard.

Outside there is ample off-road parking, a lawned enclosed garden, paved patio areas and hard standing for a garden shed.



Total area: approx. 112.9 sq. metres (1215.2 sq. feet)

These are appropriate dimensions.
Plan produced using PlanUp.

Energy Efficiency Rating		
	Current	Potential
Very energy efficient - lower running costs		
(92 plus) A		98
(81-91) B	88	
(69-80) C		
(55-68) D		
(39-54) E		
(21-38) F		
(1-20) G		
Not energy efficient - higher running costs		
England & Wales	EU Directive 2002/91/EC	