

Grassmere Way, Pillmere, Saltash, PL12 6YU

Guide Price £115,000

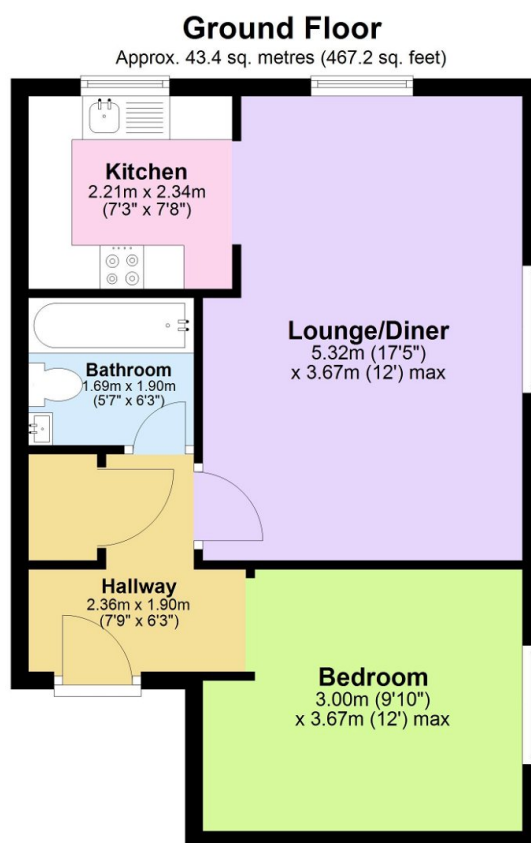
🛏 1 🚗 1 🚲 1



A fantastic opportunity to purchase a one bedroom ground floor apartment, on the popular Pillmere Estate in Saltash, Cornwall. This wonderful property is well-presented throughout and would make an excellent first time buy or investment! Additional features include: an allocated off road parking space, modern kitchen, spacious lounge/diner, double bedroom, communal gardens and tidy common areas. Call today to book your viewing!

Key Features

- Leasehold- Council Tax Band A - EPC C
- 106 Year Lease
- Service Charge £1,500pa
- Modern Ground Floor Apartment
- One Bedroom
- Allocated Parking Space
- Contemporary Kitchen & Bathroom
- Spacious Lounge/Diner
- Fantastic First Time Buy or Investment!
- To Book A Viewing Please Quote BH0675



Total area: approx. 43.4 sq. metres (467.2 sq. feet)