



ZAFER CETINEL POWERED BY **exp** TM UK

@ zafer.cetinel@exp.uk.com

zafercetinel.exp.uk.com

01242 374 844

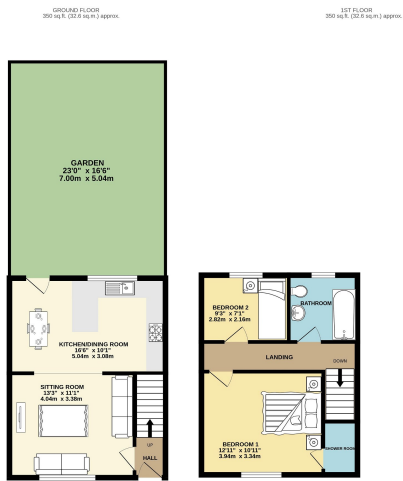
**29 Columbia Street,**  
Guide Price £280,000

🛏️ 2 🚿 2 🚪 1

- FAIRVIEW LOCATION VICTORIAN TERRACE
- TWO BEDROOMS
- SEPARATE LOUNGE
- GARDEN
- DOUBLE GLAZING AND GAS FIRE CENTRAL HEATING
- SHORT STROLLING DISTANCE TO TOWN CENTRE
- KITCHEN / DINER WITH A BREAKFAST BAR
- UPSTAIRS BATHROOM
- RESIDENTS PARKING
- PLEASE QUOTE REF ZC 0364



A well-presented two-bedroom Victorian period terrace house, set within a short stroll distance to Cheltenham Town Centre, and located less than a mile from Cheltenham Spa train station. Providing easy access to Cheltenham town center. This period property is presented in good decorative order, and in brief, comprises on the ground floor, an entrance hall, a sitting room with a fireplace and window to the front, and a 16ft kitchen/ dining room with a breakfast bar, window, and a patio door to rear garden. On the first floor, there are two bedrooms, the master with a shower room, and there is also a separate family bathroom.



COLUMBA STREET FARNHAM CHELSEA-AM  
 TOTAL FLOOR AREA: 700 sq. ft. (64.5 sq. m.) approx.  
 \*All areas are approximate and should not be used for legal purposes. Measurements are taken from the face of the wall unless otherwise stated. The actual area may vary slightly from the above figures. The above figures are for information only and do not constitute a guarantee of accuracy. The above figures are for information only and do not constitute a guarantee of accuracy. The above figures are for information only and do not constitute a guarantee of accuracy.



eXp World UK Ltd is a registered company at Level 37, 25 Canada Square, London, E14 5LQ.  
 Registered company number is 12016573. VAT Registration Number is 327 4120 29