

Myrtles Court, Pillmere, Saltash, PL12 6WD

Guide Price £280,000

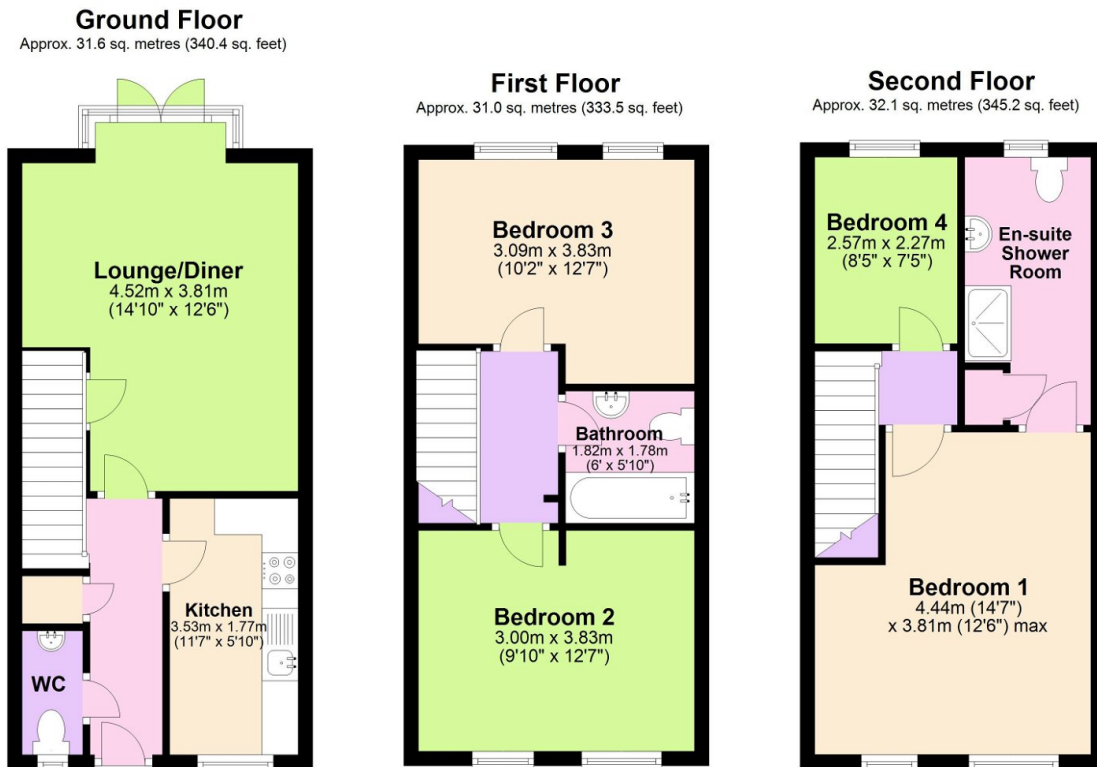
4 2 1



A fantastic four bedroom modern townhouse, tucked away in a cul-de-sac location. This spacious family home is immaculately presented throughout while also benefiting from off-road parking for two vehicles and a newly decked private rear south facing garden with AstroTurf! Additional features include; contemporary kitchen, downstairs toilet, a lovely lounge/diner with French doors, family bathroom, four good-sized bedrooms, generously sized en-suite shower room, GCH, DG & more! The property offers quick and easy access to the A38, A388, bus routes and amenities. Call today to book your viewing!

Key Features

- Freehold- Council Tax Band C - EPC TBC
- Quiet Cul-de-sac Location
- WC On Every Floor
- Parking For Two Vehicles
- New Boiler
- Fantastic Four Bedroom Modern Mid-Terrace Townhouse
- Lovely Lounge/Diner
- Excellent Size En-suite Shower Room
- Easy To Maintain South Facing Garden
- Quote BH0675 For A Viewing



Total area: approx. 94.7 sq. metres (1019.1 sq. feet)